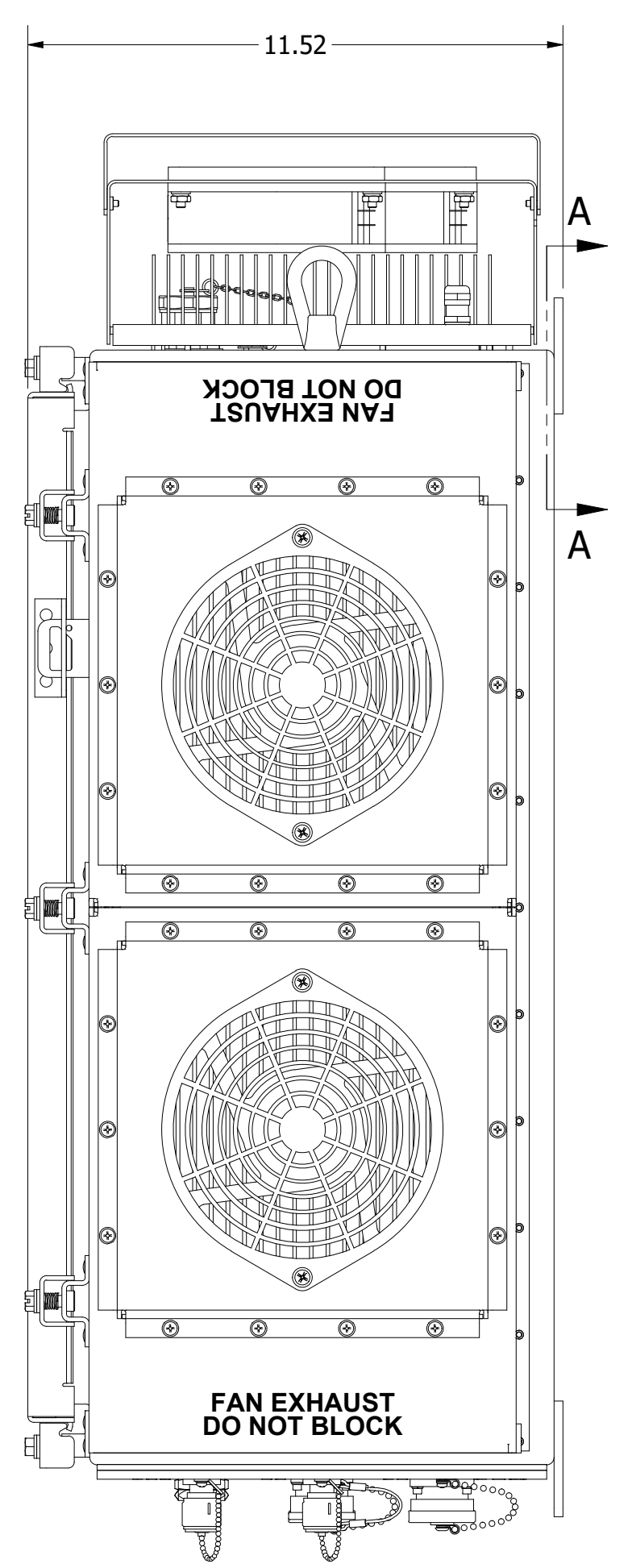
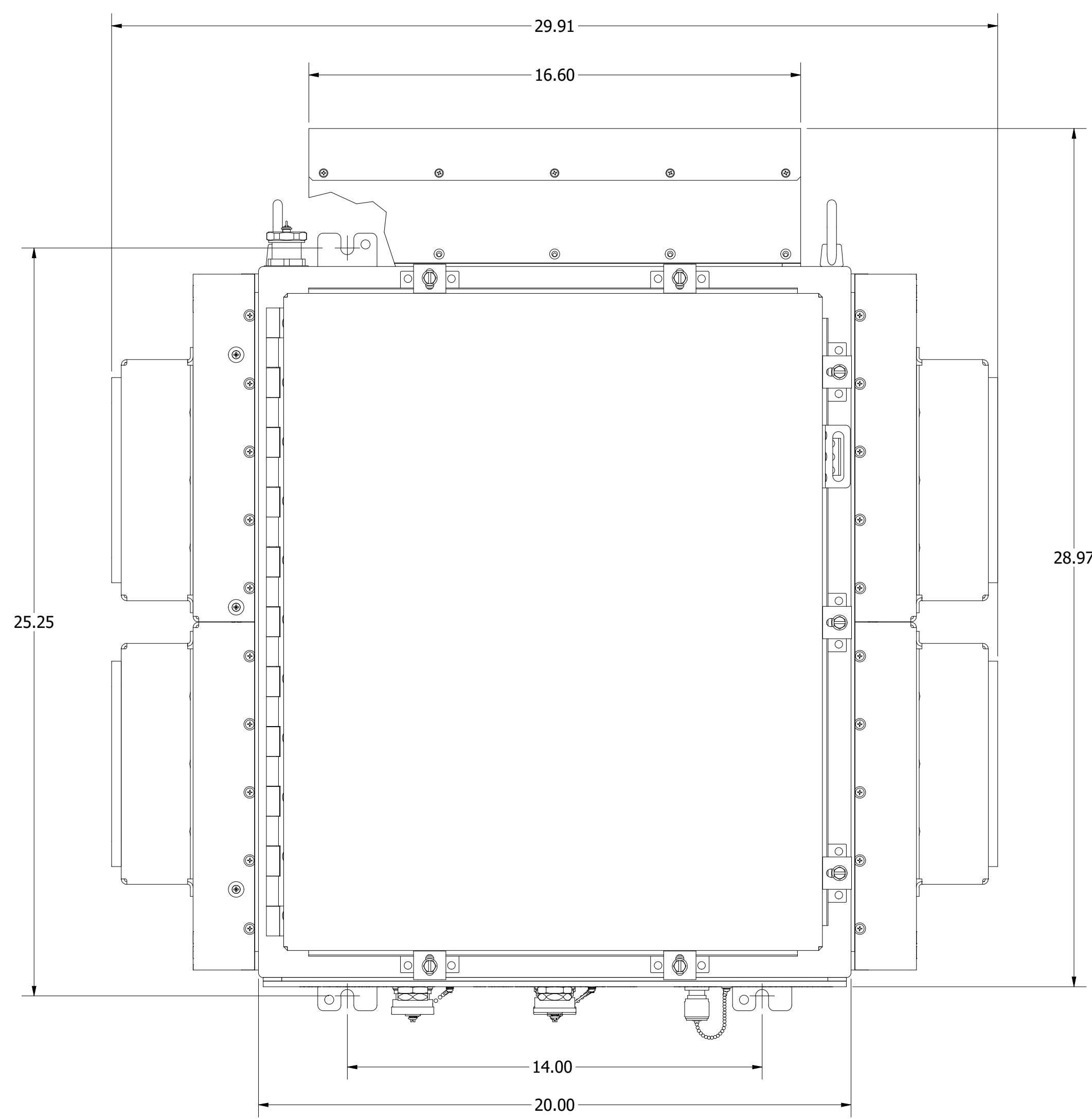
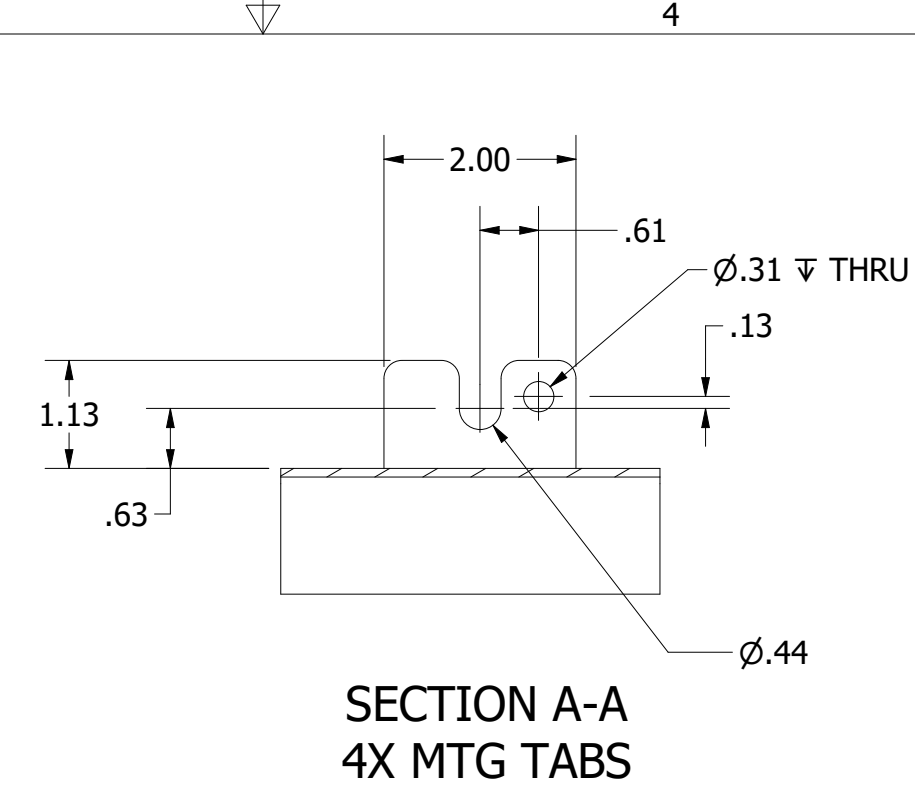
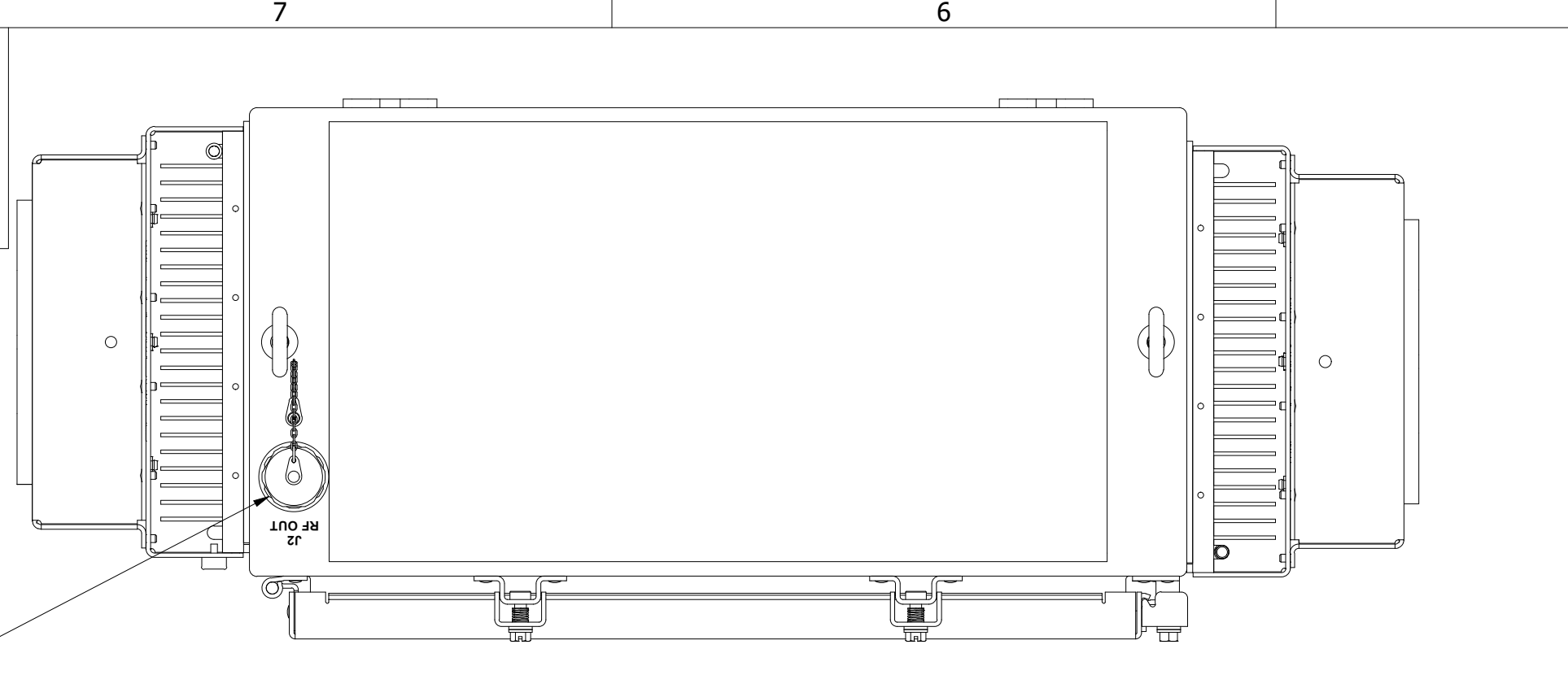
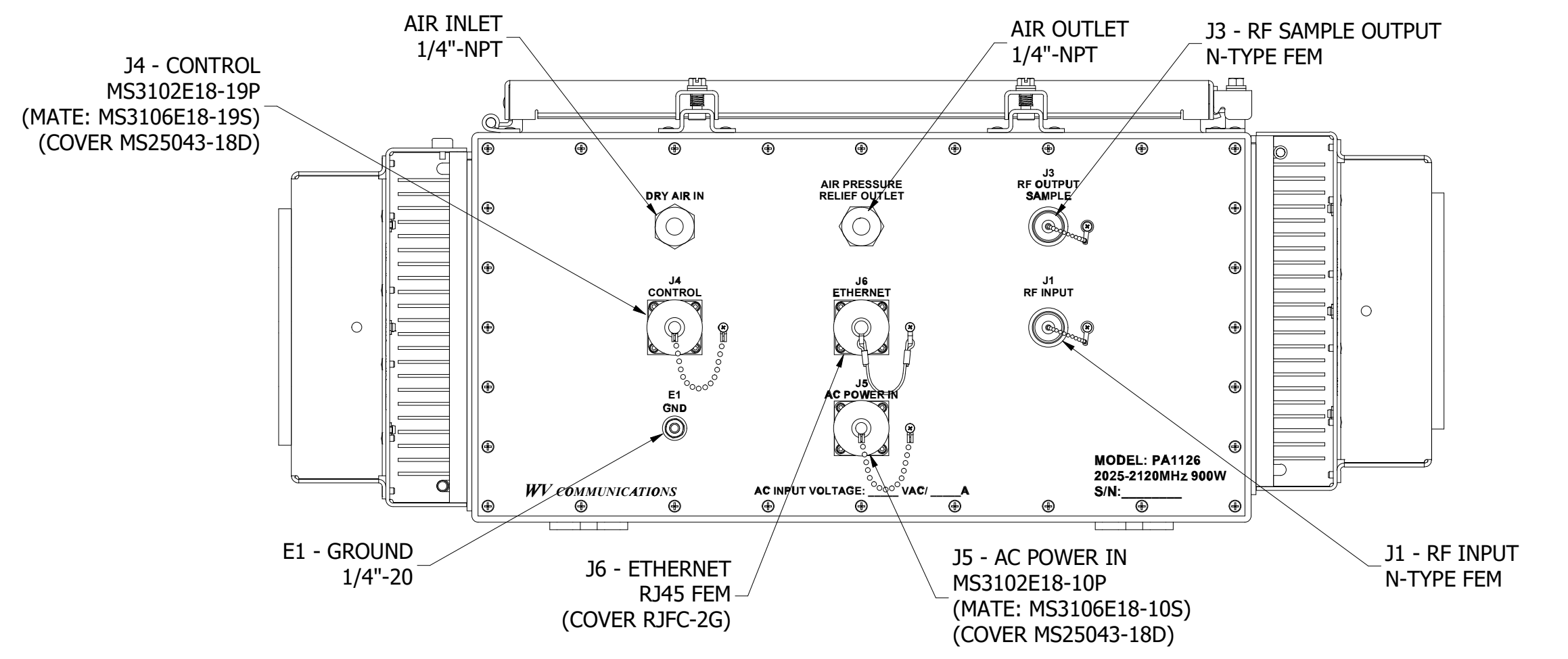


**** PROPRIETARY DATA ****
 THIS DOCUMENT CONTAINS DATA WHICH IS PROPRIETARY OR CONFIDENTIAL TO WV COMM (WV COMMUNICATIONS INCORPORATED). THIS DOCUMENT AND THE DATA CONTAINED HEREIN SHALL NOT BE USED, DUPLICATED, OR ALTERED WITHOUT THE EXPRESSED WRITTEN CONSENT OF WV COMM. ALL RIGHTS ARE RESERVED.

REVISIONS				
ZONE	REV	DESCRIPTION	DATE	APPROVED
	A	RELEASED	12/21/2021	TT



RF OPERATING FREQUENCY RANGE: 2025-2120MHz
RF OUTPUT POWER: 900W (+59.5dBm) Minimum at P3dB Comp Pt.
RF INPUT POWER: 0dBm Nominal
RF INPUT POWER W/O DAMAGE: +25dBm Maximum
SMALL SIGNAL GAIN: 60dB Minimum at P3dB Comp pt.
GAIN STABILITY: ±1.5dB Maximum over operating temperature range
GAIN FLATNESS: ±1.5dB p-p Maximum over 2025-2120MHz band, 1dB p-p Maximum over any 20MHz Range, 0.2dB p-p Maximum over any 1MHz bands into 1.25:1 Load VSWR
LOAD VSWR: Protected to operate into any Load Mismatch & Phase angle without Damage
RF ATTENUATION RANGE: 0 to 30dB in 0.1dB Steps
INPUT AND OUTPUT IMPEDANCE: 50Ω Nominal
INPUT/OUTPUT VSWR: 1.3:1 Maximum (Ref 50Ω)
NOISE FIGURE: 8dB Maximum @ maximum gain
RESIDUAL AM NOISE: -45dBc/0-10KHz, -78dBc at 500kHz, -80dBc over 0.5-1MHz
TWO TONE INTERMODULATION: -25dBc Maximum @ 3dB backoff from P3dB Comp Pt., -29dBc Maximum @ 7dB backoff from P3dB Comp Pt.
HARMONIC SIGNAL LEVELS: -60dBc Maximum
SPURIOUS SIGNAL LEVELS: -60dBc Maximum over 2200-2300MHz, -90dBc over 7.6-8.5GHz, -50dBc ±2dB Maximum
RF MONITOR OUTPUT PORT: Linear: 0.02ns/MHz Maximum, Parabolic: 0.003ns/MHz² Maximum, Ripple: 1.0ns p-p Maximum
GROUP DELAY: 2.5°/dB Maximum @ P3dB
AM/PM CONVERSION: Linear (VVA), Auto Level Control (ALC)
OPERATION MODES: Amplifier STANDBY/ONLINE, Mute
STANDARD FEATURES: Power Units in dBm or Watts, Power Adjustment, Output Thermal Overload/Shutdown, FWD/REF RF Output Power, Power Supply Voltage & Current, RF Power Module(s) Status/ Fault, Muting
INDICATORS & ALARMS: Operating: -20 to +55°C (-20°C with 10 minutes warmup), Non-Operating: -40 to +85°C
TEMPERATURE RANGES: Via Internal Color Touchscreen LCD
LOCAL CONTROL: Ethernet UDP/IP & RS-422 (both)
REMOTE CONTROL INTERFACE: Via J5 PINS A&B
TX INHIBIT: >18Vdc - Amplifier On (24Vdc Nominal), <6Vdc - Amplifier Off
COOLING REQUIRED: Via Built-In Forced Air Cooling
AMPLIFIER PROTECTION: Over temperature, VSWR & Overdrive
AC INPUT POWER: 208±10%VAC, 47-63 Hz, Three Phase, 4,800W Maximum
CONNECTORS:
RF INPUT, OUTPUT & SAMPLE: RF input & Sample N-type Female, Output 7/16 DIN Female
CONTROL (I/O): 10-Pin MS-type RS-232/Control (mate provided), RJ45 Ethernet, RFJTV21
AC INPUT: 7-Pin MS-type (mate provided)
ENCLOSURE: Waterproof with Positive Pressure air inlet, 1 PSI Safety relief valve
WEIGHT: 120Lbs Maximum
SIZE: 29.7"X28.5"X11.50"
PAINT: White Color # 17925 Fed-std-595 Per MIL-PRF-82585



EXTERNAL INTERFACE CONNECTORS			
REF DES	DESCRIPTION	CONN TYPE	CONN MATE
J1	RF INPUT	N-TYPE FEM	N-TYPE MALE
J2	RF OUTPUT	7/16 DIN-F	7/16 DIN-M
J3	RF SAMPLE OUTPUT	N-TYPE FEM	N-TYPE MALE
J4	CONTROL	MS3102E18-19P	MS3106E18-19S
J5	AC POWER	MS3102E18-10P	MS3106E18-10S
J6	ETHERNET	RJ-45	RJ-45

J4 - CONTROL	
PIN#	DESCRIPTION
A	REMOTE INTERLOCK +V
B	REMOTE INTERLOCK -V
C	N/U
D	RX+
E	RX-
F	RS-422 RTN
G	TX+
H	TX-
J	N/U
K	N/U

J6 - ETHERNET	
PIN#	DESCRIPTION
1	TX+
2	TX-
3	RX+
4	N/U
5	N/U
6	RX-
7	N/U
8	N/U

J5 - AC POWER	
PIN#	DESCRIPTION
A	PHASE 1
B	PHASE 2
C	PHASE 3
D	NEUTRAL

APPROVALS		DATE
DRAWN	TONY T	12/21/2021
CHECKED	TT	12/21/2021
MECH ENGR	TT	12/21/2021
ELEC ENGR	TT	12/21/2021
PRODUCTION	AM	12/21/2021
Q.A.	SG	12/21/2021

WV Communications 1125 A Business Center Circle
 Newbury Park, CA

AMPLIFIER
 2025-2120MHz 900W OUTDOOR
 MODEL: PA1126

SIZE	CAGE CODE	DWG. NO.	REV
D	1GFQ7	050-51128	A
SCALE	MODEL NO.	SHEET	1 OF 1
NONE	PA1126	1	

UNLESS OTHERWISE SPECIFIED: DIMENSIONS ARE IN INCHES. TOLERANCES ARE:
 FRACTIONS DECIMALS ANGLES HOLES
 ± 1/64 ±.01 ±.030 ±.005
 .XX ±.005 .XXX ±.001
 MACHINED FINISH: 32 RMS REMOVE BURRS .005 MAX MATERIAL

FINISH -
 900-50525 PA1126
 NEXT ASSEMBLY USED ON
 APPLICATION DO NOT SCALE DRAWING

050-51128

REV A

DWG NO.

A