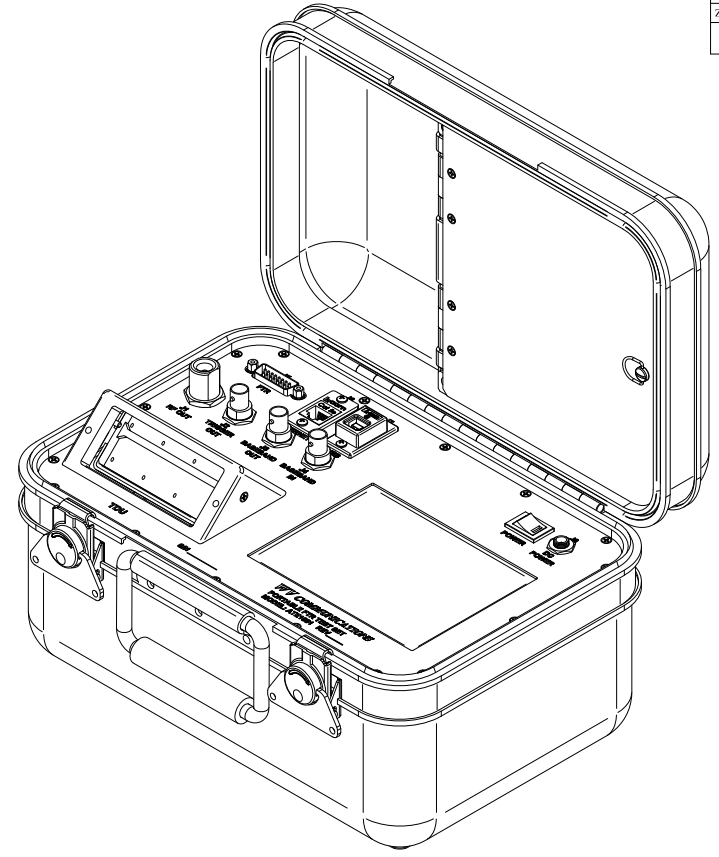
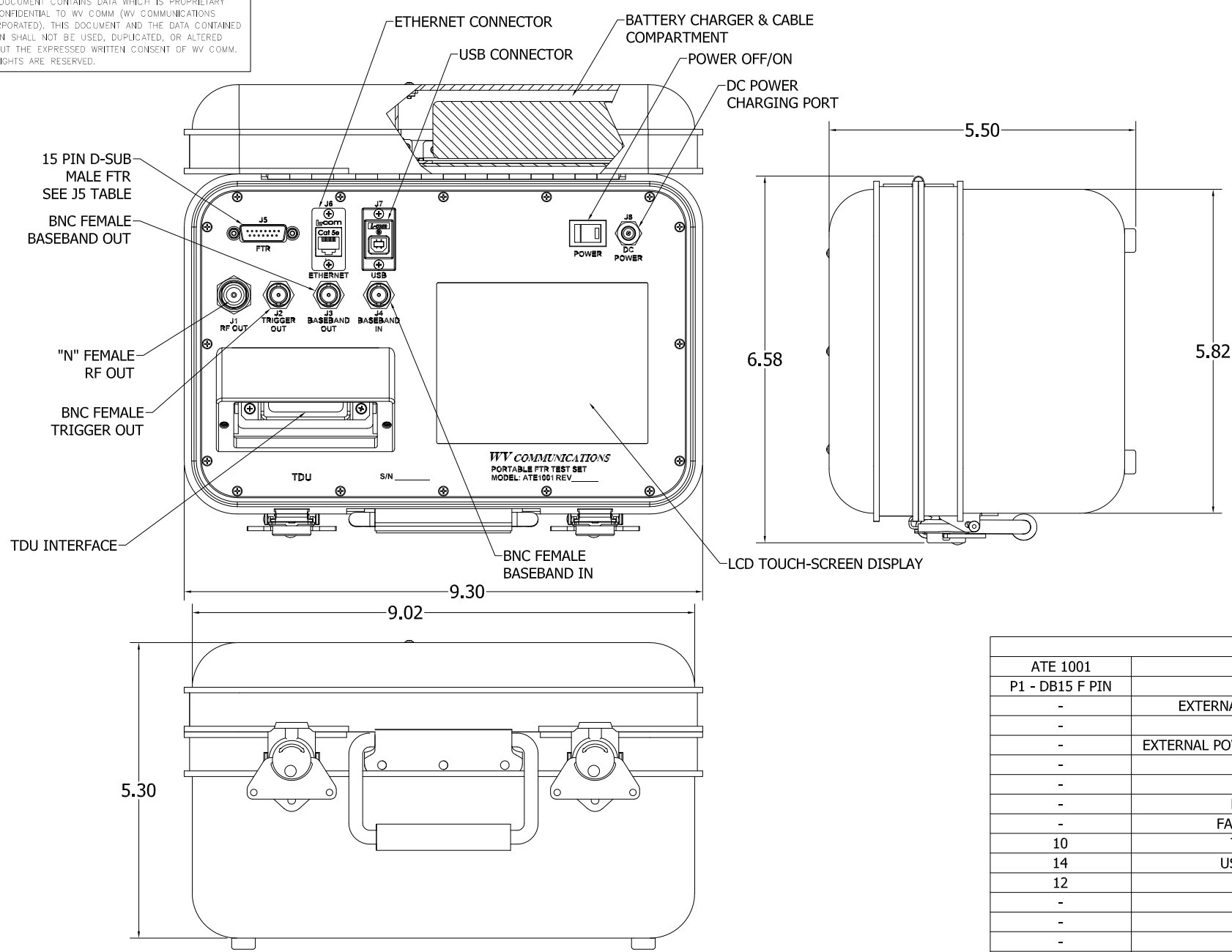


**** PROPRIETARY DATA ****
 THIS DOCUMENT CONTAINS DATA WHICH IS PROPRIETARY OR CONFIDENTIAL TO WV COMM (WV COMMUNICATIONS INCORPORATED). THIS DOCUMENT AND THE DATA CONTAINED HEREIN SHALL NOT BE USED, DUPLICATED, OR ALTERED WITHOUT THE EXPRESSED WRITTEN CONSENT OF WV COMM. ALL RIGHTS ARE RESERVED.

REVISONS		DATE	APPROVED
ZONE	REV	DESCRIPTION	
A	RELEASED		7/6/2017 TT

D
C
B
A

D
C
B
A



J5 FTR (DSUB)	
PIN	NAME
1	GND
2	RSTO
3	SSTO
4	
5	RX1
6	TX1
7	RX2
8	GND
9	ARM
10	TERM
11	CHECK
12	CMD1
13	CMD2
14	CMD3
15	

- **Generates Commands**
 - IRIG Commands Pilot and tones
 - High Alphabet Commands and Pilot
 - EFTS messages
 - FSK protocols
 - External analog baseband input for special modulation
 - Frame pulse output for timing measurement
- **Reads and displays FTR status**
 - SSTO (Carrier) level
 - RSTO (EFTS state) or similar analog telemetry
 - Read up to 6 discrete FTR command outputs
 - EFTS FTR serial status information
 - EFTS FTR serial User bits
- **Configure EFTS FTR via USB port**
- **Can perform RCC-313 tests 10, 13 – 23, 26, 29, 32 – 34, 35 – 40**
- **RF output from 10 MHz to 1 GHz for susceptibility testing**
- **RF level from -140 dBm to +13 dBm for sensitivity and other RF testing**
- **Carrier frequency settable in 1 kHz steps**
- **Tone frequencies settable in 1 Hz steps**
- **Includes rechargeable battery power – up to 7 hours operation on a charge**
- **External Modulation input supports custom signals**

1 NOTE: THE IRIG INTERFACE CABLE ASSY. (CB-0068) AND THE EFTS INTERFACE CABLE ASSY. (CB-0069) ARE PROVIDED WITH THE UNIT.

CB-0068		
ATE 1001	J5 FTR (DSUB)	FTR.
P1 - DB15 F PIN	IRIG SIGNAL NAME 1	P2 - MDM25 M PIN
-	EXTERNAL POWER 28V+ (RED WIRE)	1
-	N/U	2
-	EXTERNAL POWER 28V+ RETURN (BLACK WIRE)	3
-	N/U	4
-	N/U	5
-	FAILSAFE ENABLE IN	6
-	FAILSAFE CROSS LINK IN	7
10	TERMINATE OUTPUT	8
14	USER DEFINED OUTPUT	9
12	OPTIONAL OUTPUT	10
-	N/U	11
-	N/U	12
-	N/U	13
-	N/U	14
2	FAILSAFE TELEMETRY OUT	15
-	N/U	16
-	N/U	17
1	SIGNAL COMMON	18
-	N/U	19
-	N/U	20
11	TONE D TELEMETRY	21
13	MONITOR OUTPUT	22
9	ARM OUTPUT	23
3	SIGNAL STRENGTH OUTPUT	24
8	SIGNAL STRENGTH RETURN	25
TBD**	SPARE	TBD**
TBD**	SPARE	TBD**

CB-0069		
ATE 1001	J5 FTR (DSUB)	FTR.
P1 - DB15 F PIN	EFTS SIGNAL NAME 1	P2 - MDM25 M PIN
-	EXTERNAL POWER 28V+ (RED WIRE)	1
5	CONFIGURATION TX RS-232	2
-	EXTERNAL POWER 28V+ RETURN (BLACK WIRE)	3
-	N/U	4
-	N/U	5
-	FAILSAFE ENABLE IN	6
-	FAILSAFE CROSS LINK IN	7
10	TERMINATE OUTPUT	8
-	N/U	9
12	OPTIONAL OUTPUT	10
-	N/U	11
2	RCVR STATE TM OUT	12
-	N/U	13
-	N/U	14
14	FAILSAFE TELEMETRY OUT	15
11	CHECK CHANNEL OUT	16
-	N/U	17
1	SIGNAL COMMON	18
-	N/U	19
-	N/U	20
-	N/U	21
13	MONITOR OUTPUT	22
9	ARM OUTPUT	23
3	SIGNAL STRENGTH OUTPUT	24
8	SIGNAL STRENGTH RETURN	25
TBD**	SPARE	TBD**
TBD**	SPARE	TBD**

UNLESS OTHERWISE SPECIFIED, DIMENSIONS ARE IN INCHES. TOLERANCES ARE: FRACTIONS DECIMALS ANGLES HOLES ± 1/64 .XX±.01 ± 0.30 .XX±.005 MACHINED FINISH: .32 RMS REMOVE BURRS .005 MAX MATERIAL		APPROVALS	DATE	WV Communications 1125 A Business Center Circle Newbury Park, CA PORTABLE FTR TEST SET MODEL: ATE1001
900-50450	ATE1001	TONY T	7/6/2017	
NEXT ASSEMBLY	USED ON	TT	7/6/2017	
		MECH ENGR	7/6/2017	
		ELEC ENGR	7/6/2017	
APPLICATION	DO NOT SCALE DRAWING	PRODUCTION	7/6/2017	SIZE CAGE CODE DWG. NO. D 1GFQ7 050-51020
		Q.A.	7/6/2017	SCALE Model No. SHEET NONE FTR1000 1 OF 1

050-51020