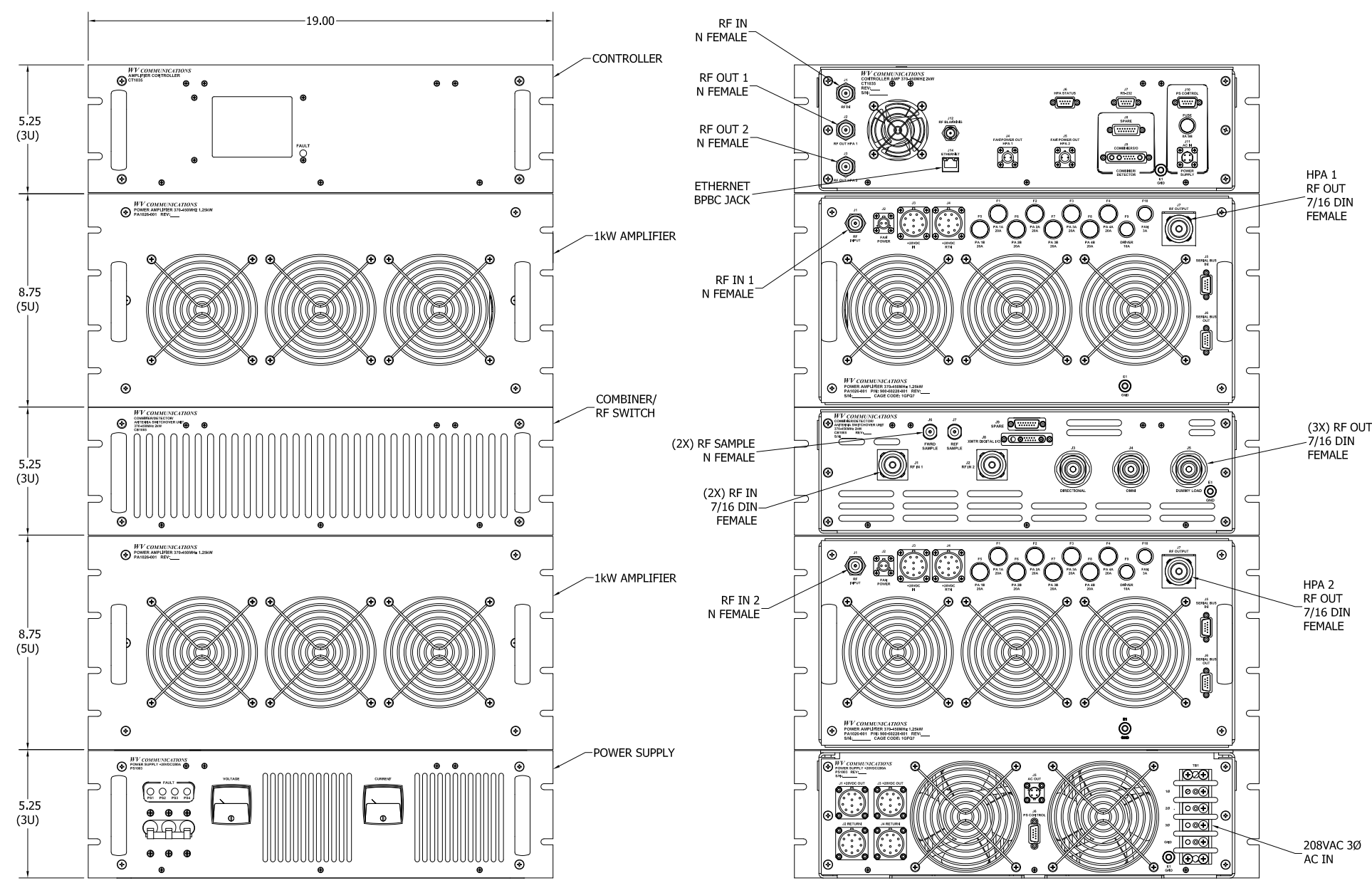


**** PROPRIETARY DATA ****
 THIS DOCUMENT CONTAINS DATA WHICH IS PROPRIETARY OR CONFIDENTIAL TO WV COMM (WV COMMUNICATIONS INCORPORATED). THIS DOCUMENT AND THE DATA CONTAINED HEREIN SHALL NOT BE USED, DUPLICATED, OR ALTERED WITHOUT THE EXPRESSED WRITTEN CONSENT OF WV COMM. ALL RIGHTS ARE RESERVED.

REVISIONS				
ZONE	REV	DESCRIPTION	DATE	APPROVED
	A	RELEASED	6/10/2015	TT
	B	ADDED HAZARD LIGHT INFO	3/16/2020	JA

D
C
B
A



SPECIFICATIONS SUMMARY

OPERATING FREQUENCY RANGES: 370-450MHz
RF OUTPUT POWER: 2kW Min at P1dB Compression Pt.
RF OUTPUT PROTECTION: Integral Output Isolator protected No Oscillation at any Phase Angle at any Load Impedance and angle
RF INPUT POWER: -10dBm to +3dBm
MAXIMUM RF INPUT POWER: +10dBm Maximum W/O Damage
SMALL SIGNAL GAIN FLATNESS: ±1.5dB Maximum Into 1.05:1 VSWR
INPUT AND OUTPUT IMPEDANCE: 50Ω Nominal
INPUT VSWR: 1.5:1 Maximum (Ref 50Ω)
HARMONIC SIGNAL LEVELS: Integral Low Pass Filter
 -90dBc Maximum from 720 – 2700MHz
 -55dBc Maximum from 370-450MHz
 -80dBc Maximum from 1-370MHz & 450-3000MHz
SPURIOUS SIGNAL LEVELS:
RF OUTPUT CONNECTORS: 7/16 DIN Female 3ea
RF OUTPUT SELECTION: User Selectable Load/Omni/Directional Internally blanked when switched
OUTPUT POWER CONTROL: 23dBc Minimum
RF BLANKING INPUT POLARITY: Short to GND-RF ON, Open-RF Blanking (Internally Pull up to +5V)
RF HAZARD LIGHT OUTPUT POLARITY: Short to GND-RF ON, Open-RF Off (Open Collector output 200mA/5V Maximum)
RF OUTPUT TURN-ON-TIME: <50 mSec after RF power received
SWITCHING TIME: <100mSec between any of the Outputs
LOCAL CONTROL: Via Color Touchscreen LCD
REMOTE CONTROL: Via RS-232 & Ethernet (UDP)
RF OUTPUT SAMPLE: -63dBc from Output Power Level, (FWD & REF)
COOLING: Forced air via integral Front Panel Intake and Rear Panel Exhaust Fans
OVER TEMPERATURE PROTECTION: Thermostat Shut-Off Indication at +77°C Heatsink Temperature
TEMPERATURE RANGES: Operating 0 to +50°C
ALTITUDE: MSL to 70,000 Ft
CHASSIS DEPTH: 26.75" Maximum
AC INPUT POWER: 170-264VAC, 47-63Hz 3 Phase at 6.75kW Maximum
WEIGHT: 350 lbs Maximum
FRONT PANEL COLOR: FED-STD-595 Grey 26307

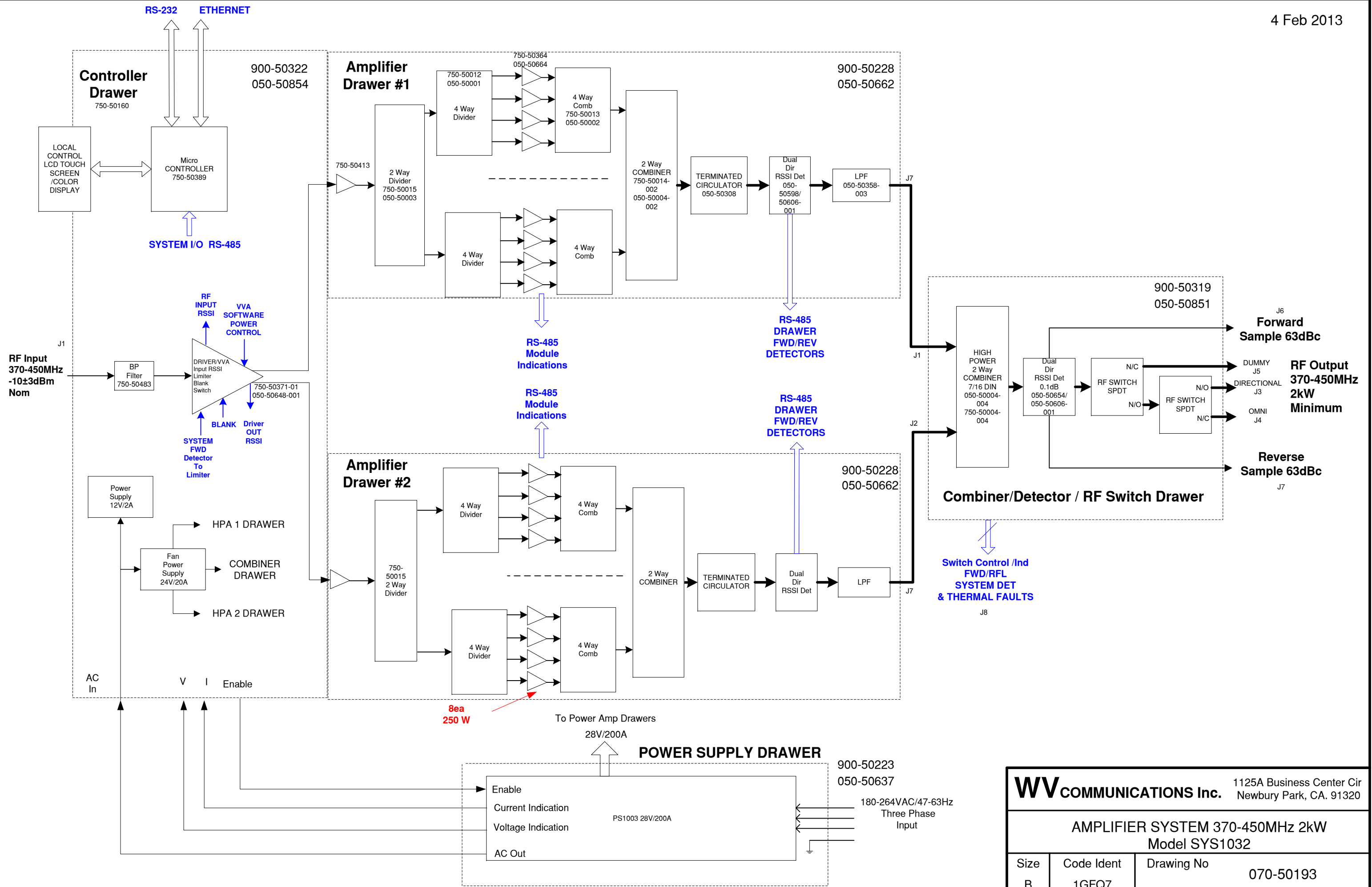
NOTE: PA1026-001 J7 USES 7/16 DIN FEMALE STARTING AT S/N: 113

UNLESS OTHERWISE SPECIFIED: DIMENSIONS ARE IN INCHES. TOLERANCES ARE:		APPROVALS	DATE	WV Communications 1176 Tourmaline Dr. Newbury Park, CA
FRACTIONS	DECIMALS	ANGLES	HOLE	
± 1/64	.XXX1	±0°30'	.XXX1	AMPLIFIER SYSTEM, 370-450MHz 2kW SYS1032
.XXX1	.005		.XXX1	
MACHINED FINISH: 32 RMS REMOVE BURRS .005 MAX		DRAWN TONY T CHECKED TT MECH ENGR TT ELEC ENGR JT PRODUCTION AM Q.A. DB	5/13/2011 5/13/11 5/13/11 5/13/11 5/13/11	SIZE D CAGE CODE 1GFQ7 DWG. NO. 050-50852 REV B
MATERIAL		900-50320 SYS1032 NEXT ASSEMBLY USED ON APPLICATION DO NOT SCALE DRAWING		

D
C
B
A

REV. B
 DWG. NO. 050-50852

SHEET 1 OF 1



WV COMMUNICATIONS Inc. 1125A Business Center Cir
Newbury Park, CA. 91320

**AMPLIFIER SYSTEM 370-450MHz 2kW
Model SYS1032**

Size	Code Ident	Drawing No
B	1GFQ7	070-50193