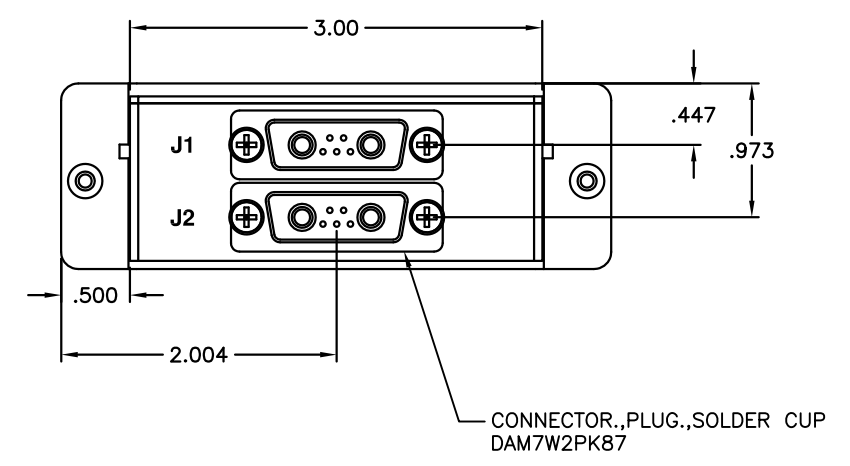
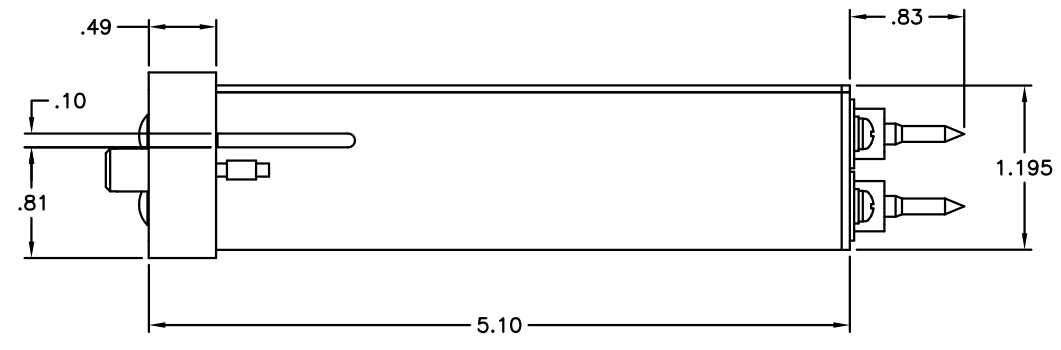
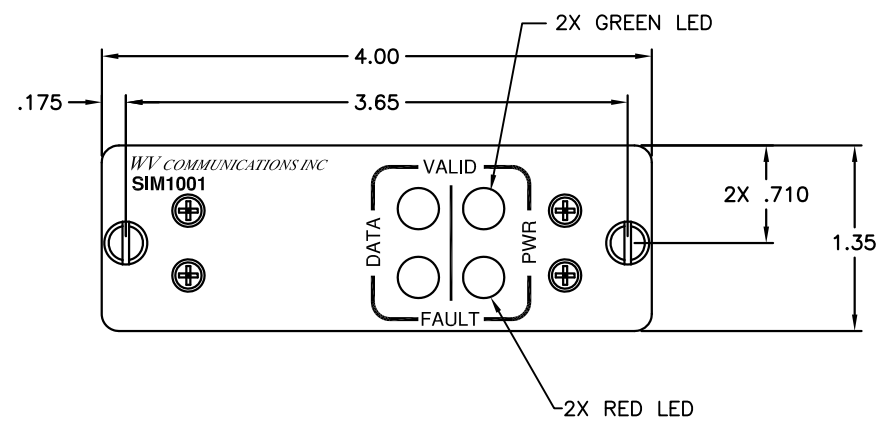
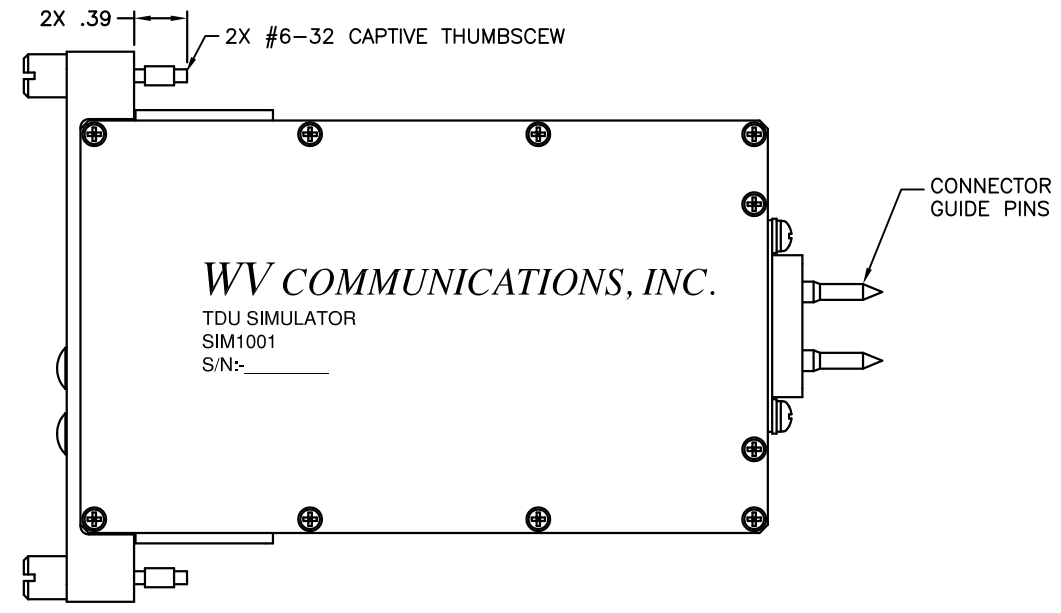


**** PROPRIETARY DATA ****
 THIS DOCUMENT CONTAINS DATA WHICH IS PROPRIETARY OR CONFIDENTIAL TO WV COMM (WV COMMUNICATIONS INCORPORATED). THIS DOCUMENT AND THE DATA CONTAINED HEREIN SHALL NOT BE USED, DUPLICATED, OR ALTERED WITHOUT THE EXPRESSED WRITTEN CONSENT OF WV COMM. ALL RIGHTS ARE RESERVED.

REVISIONS				
ZONE	REV	DESCRIPTION	DATE	APPROVED
	A	RELEASED	03/08/11	TT



SPECIFICATION SUMMARY:

COMMANDS: Factory Programmed with a Test Key
COMMAND DEFINITIONS: Factory Programmed Per NSA Standard Test Code

ENVIRONMENTAL:

OPERATING TEMPERATURE RANGE: 0 to +50°C
OPERATING RELATIVE HUMIDITY: 0 - 95 %
OPERATING ALTITUDE: 0-10,000 Feet
DC INPUT: All DC Voltages per Original TDU Manufacturer Specifications
ENCLOSURE COLOR: Gray Per FED-STD-26307

UNLESS OTHERWISE SPECIFIED: DIMENSIONS ARE IN INCHES. TOLERANCES ARE:		APPROVALS	DATE	WV Communications	
FRACTIONS	DECIMALS	DRAWN	03/08/11	1176 Tourmaline Dr. Newbury Park, CA	
± 1/64	.XXX	CHIRAG S.	03/08/11	SIMULATOR TDU MODEL: SIM1001	
ANGLES	CHECKED	TT	03/08/11		
RULES	MECH ENGR	T.T.	03/08/11		
XXX°.005	ELEC ENGR	J.T.	03/08/11		
MACHINED FINISH: 32 RMS	REMOVE BURRS .005 MAX	PRODUCTION	A.M.	03/08/11	SIZE: CAGE CODE D 1GFQ7
MATERIAL		Q.A.	D.B.	03/08/11	DWG. NO. 050-50840
FINISH		SCALE: NONE		REV 1 OF 1	
900-50308	SIM1001	DO NOT SCALE DRAWING		SHEET 1 OF 1	
NEXT ASSEMBLY	USED ON				

DWG NO. 050-50840 REV A