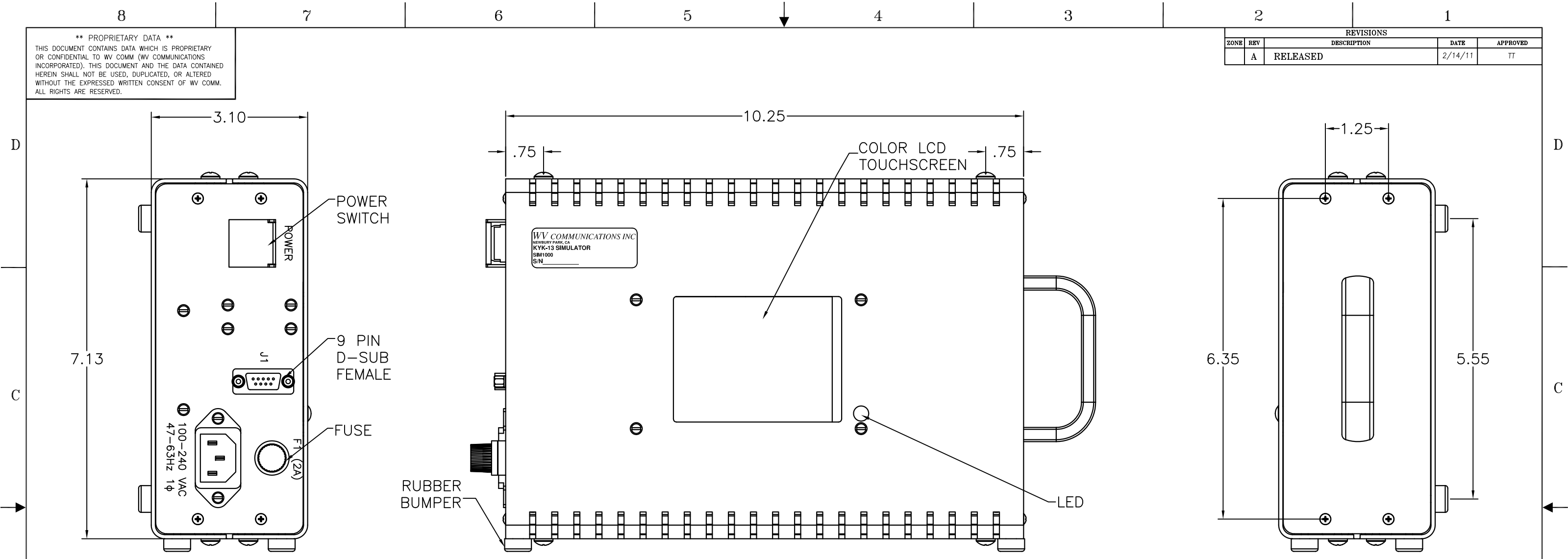


**\*\* PROPRIETARY DATA \*\***  
 THIS DOCUMENT CONTAINS DATA WHICH IS PROPRIETARY OR CONFIDENTIAL TO WV COMM (WV COMMUNICATIONS INCORPORATED). THIS DOCUMENT AND THE DATA CONTAINED HEREIN SHALL NOT BE USED, DUPLICATED, OR ALTERED WITHOUT THE EXPRESSED WRITTEN CONSENT OF WV COMM. ALL RIGHTS ARE RESERVED.

REVISIONS				
ZONE	REV	DESCRIPTION	DATE	APPROVED
	A	RELEASED	2/14/11	TT



**SPECIFICATION SUMMARY:**

**COMMANDS:** Factory Programmed 5 Commands; ARM, DESTROY, AUX1, AUX2, AUX3

**COMMAND DEFINITIONS:** Factory Programmed Per NSA Standard Test Codes

**ENVIRONMENTAL:**

**OPERATING TEMPERATURE RANGE:** 0 to +50°C

**OPERATING RELATIVE HUMIDITY:** 0 – 95 %

**OPERATING ALTITUDE:** 0-10,000 Feet

**AC INPUT:** 115/230 VAC, 1Ø 47-63Hz Auto-Switch at 1.0/0.5 Amp Maximum respectively

**ENCLOSURE COLOR:** Gray

**SUPPLIED CABLES:** 1ea DB9 - GC329 KYK13 Standard Connector  
 Umbilical 5' long  
 1ea AC Cord Standard NEMA

J1 D-SUB	
PIN NO.	PIN NAME
1	+6.5V
2	N/U
3	START OUT
4	DATA OUT
5	CLOCK OUT
6	N/U
7	N/U
8	N/U
9	N/U

UNLESS OTHERWISE SPECIFIED: DIMENSIONS ARE IN INCHES. TOLERANCES ARE:		APPROVALS	DATE	<i>WV Communications</i> 1176 Tourmaline Dr. Newbury Park, CA
FRACTIONS	DECIMALS	ANGLES	HOLE	
± 1/64	.XXX-01	±0°30'	.XXX-005	<b>KYK13 SIMULATOR</b> <b>WV PART NUMBER SIM1000</b>
	.XXX-005		.XXX+.003	
MACHINED FINISH: 32 RMS REMOVE BURRS .005 MAX		DRAWN CHIRAG S. 2/14/11 CHECKED TT 2/14/11 MECH ENGR CS 2/14/11 ELEC ENGR JT 2/14/11 PRODUCTION AM 2/14/11	Q.A. DB 2/14/11	SIZE D CAGE CODE 1GFQ7 DWG. NO. 050-50834 SCALE NONE
900-50306	SIM1000	APPLICATION DO NOT SCALE DRAWING		SHEET 1 OF 1

REV A  
 DWG NO. 050-50834