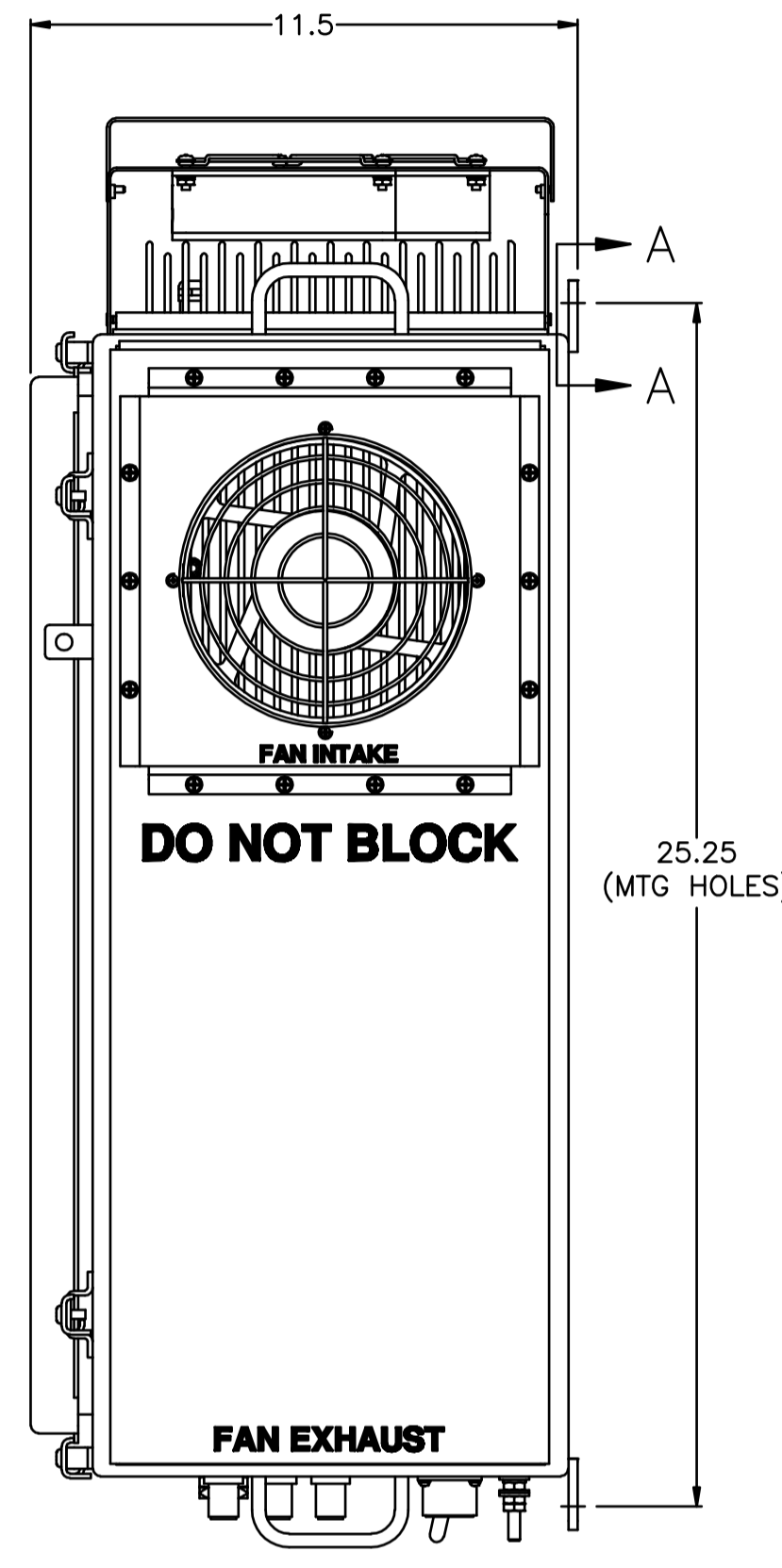
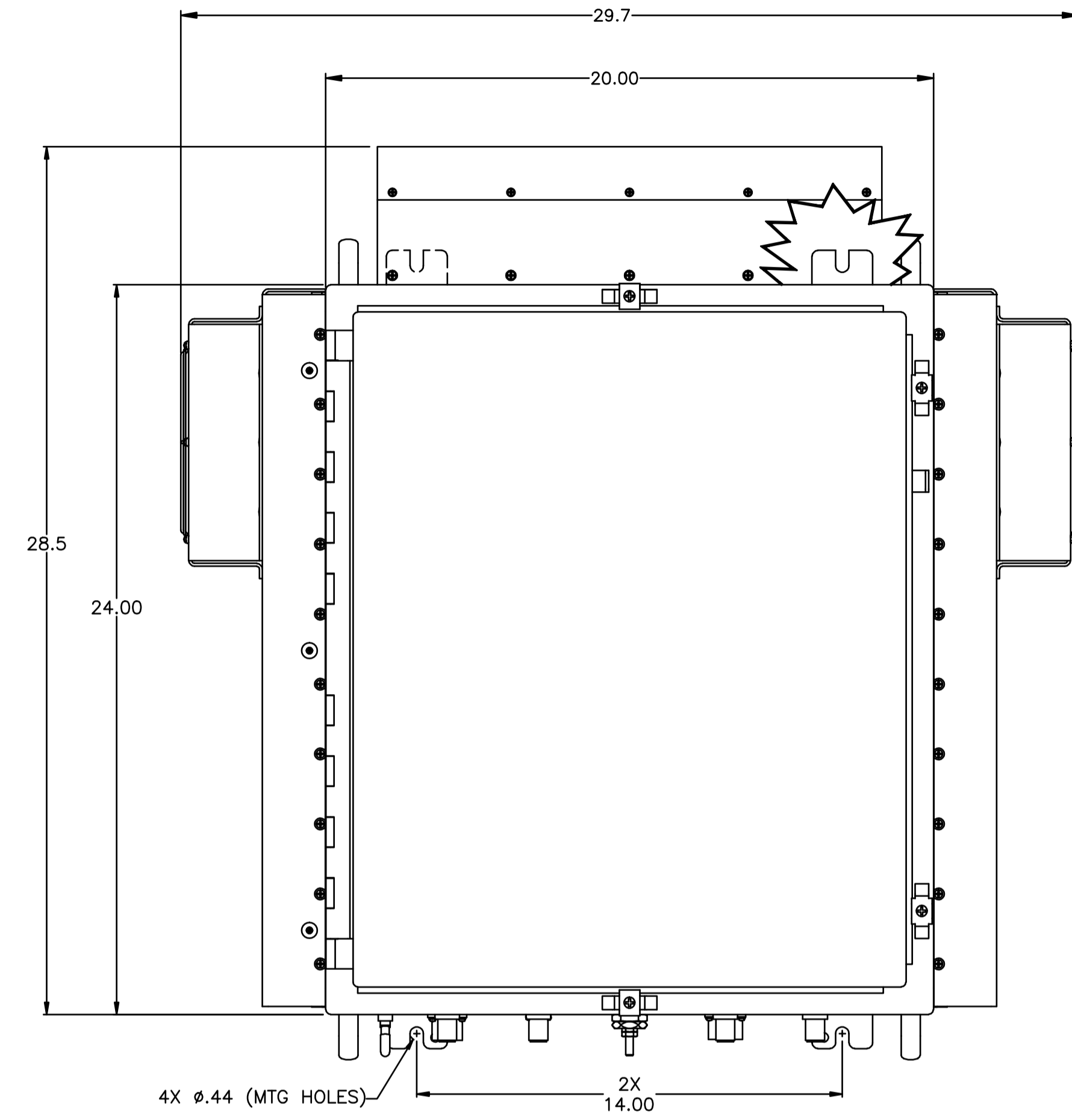


**** PROPRIETARY DATA ****
 THIS DOCUMENT CONTAINS DATA WHICH IS PROPRIETARY OR CONFIDENTIAL TO WV COMM (WV COMMUNICATIONS INCORPORATED). THIS DOCUMENT AND THE DATA CONTAINED HEREIN SHALL NOT BE USED, DUPLICATED, OR ALTERED WITHOUT THE EXPRESSED WRITTEN CONSENT OF WV COMM. ALL RIGHTS ARE RESERVED.

REVISIONS				
ZONE	REV	DESCRIPTION	DATE	APPROVED
	B	ADDED PWR SW & HIGH VOL FAN OPT.	10/14/10	TT



'S' BAND 100W Specifications:

OPERATING FREQUENCY RANGE: 2025-2120MHz
RF OUTPUT POWER: 100W (+50dBm) Minimum 1dB Comp
RF OUT SAMPLE: -40dBc Nominal
RF OUTPUT PROTECTION: Protected to operate into any Load mismatch over RF Bandwidth & Phase without Damage
GAIN FLATNESS OVER RF BAND: ±1.0dB Maximum into 1.25:1 Load VSWR
GAIN FLATNESS OVER ANY 1MHz BAND: ±0.1dB Maximum
RF INPUT POWER: 0dBm Nominal
RF GAIN: 50dB Minimum
RF GAIN STABILITY: ±0.5dB/24Hr Maximum
RESIDUAL AM: -40dBc Minimum over 250Hz-4KHz
 -55dBc Minimum at 4KHz
 -60dBc Minimum at 500KHz
 -60dBc Minimum in 5MHz BW below Peak
 Deviation of ±2MHz
RESIDUAL FM: 0 to 20dB in 0.1dB Steps
RF ATTENUATION RANGE: +3dBm Maximum in AGC Mode
RF INPUT POWER W/O DAMAGE: 50Ω Nominal
INPUT AND OUTPUT IMPEDANCE: 1.5:1 Maximum (Ref 50Ω)
INPUT /OUTPUT VSWR: -80dBc Minimum
HARMONIC / SPURIOUS LEVELS: Operating -20 to +50°C cold start
 Storage -50 to +70°C
 Via Conduction/Built-in Forced Air Cooling
 Over Temperature, VSWR, Overdrive
 Via Internal Color LCD/Touchscreen Controller
TEMPERATURE RANGES: Ethernet UDP/IP via - RJ-45 Female
COOLING REQUIRED:
AMPLIFIER PROTECTION:
LOCAL CONTROL:
REMOTE CONTROL/MONITORING:

'L' BAND 100W Specifications:

OPERATING FREQUENCY RANGE: 1750-1850MHz
RF OUTPUT POWER: 100W (+50dBm) Minimum 1dB Comp
RF OUT SAMPLE: -40dBc Nominal
RF OUTPUT PROTECTION: Protected to operate into any Load mismatch over RF Bandwidth & Phase without Damage
GAIN FLATNESS OVER RF BAND: ±1.0dB Maximum into 1.25:1 Load VSWR
GAIN FLATNESS OVER ANY 1MHz BAND: ±0.1dB Maximum
RF INPUT POWER: 0dBm Nominal
RF GAIN: 50dB Minimum
RF GAIN STABILITY: ±0.5dB/24Hr Maximum
RESIDUAL AM: -40dBc Minimum over 250Hz-4KHz
 -55dBc Minimum at 4KHz
 -60dBc Minimum at 500KHz
 -60dBc Minimum in 5MHz BW below Peak
 Deviation of ±2MHz
RESIDUAL FM: 0 to 20dB in 0.1dB Steps
RF ATTENUATION RANGE: +3dBm Maximum
RF INPUT POWER W/O DAMAGE: 50Ω Nominal
INPUT AND OUTPUT IMPEDANCE: 1.5:1 Maximum (Ref 50Ω)
INPUT /OUTPUT VSWR: -80dBc Minimum
HARMONIC / SPURIOUS LEVELS: Operating -20 to +50°C cold start
 Storage -50 to +70°C
 Via Conduction/Built-in Forced Air Cooling
 Over Temperature, VSWR, Overdrive
 Via Internal Color LCD/Touchscreen Controller
TEMPERATURE RANGES: Ethernet UDP/IP via - RJ-45 Female
COOLING REQUIRED:
AMPLIFIER PROTECTION:
LOCAL CONTROL:
REMOTE CONTROL/MONITORING:

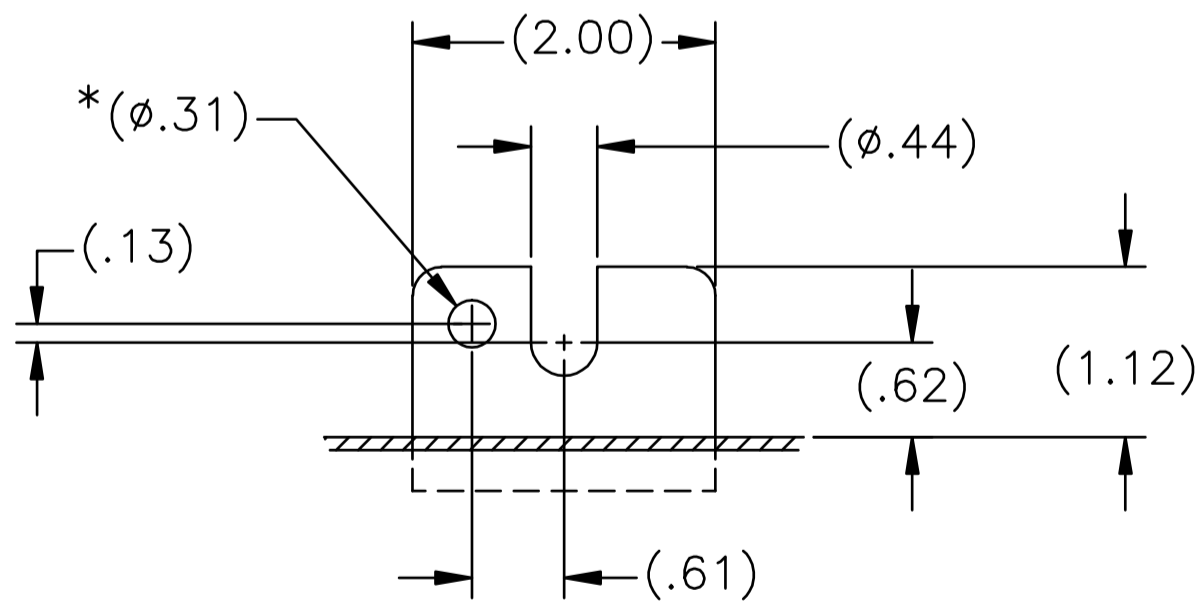
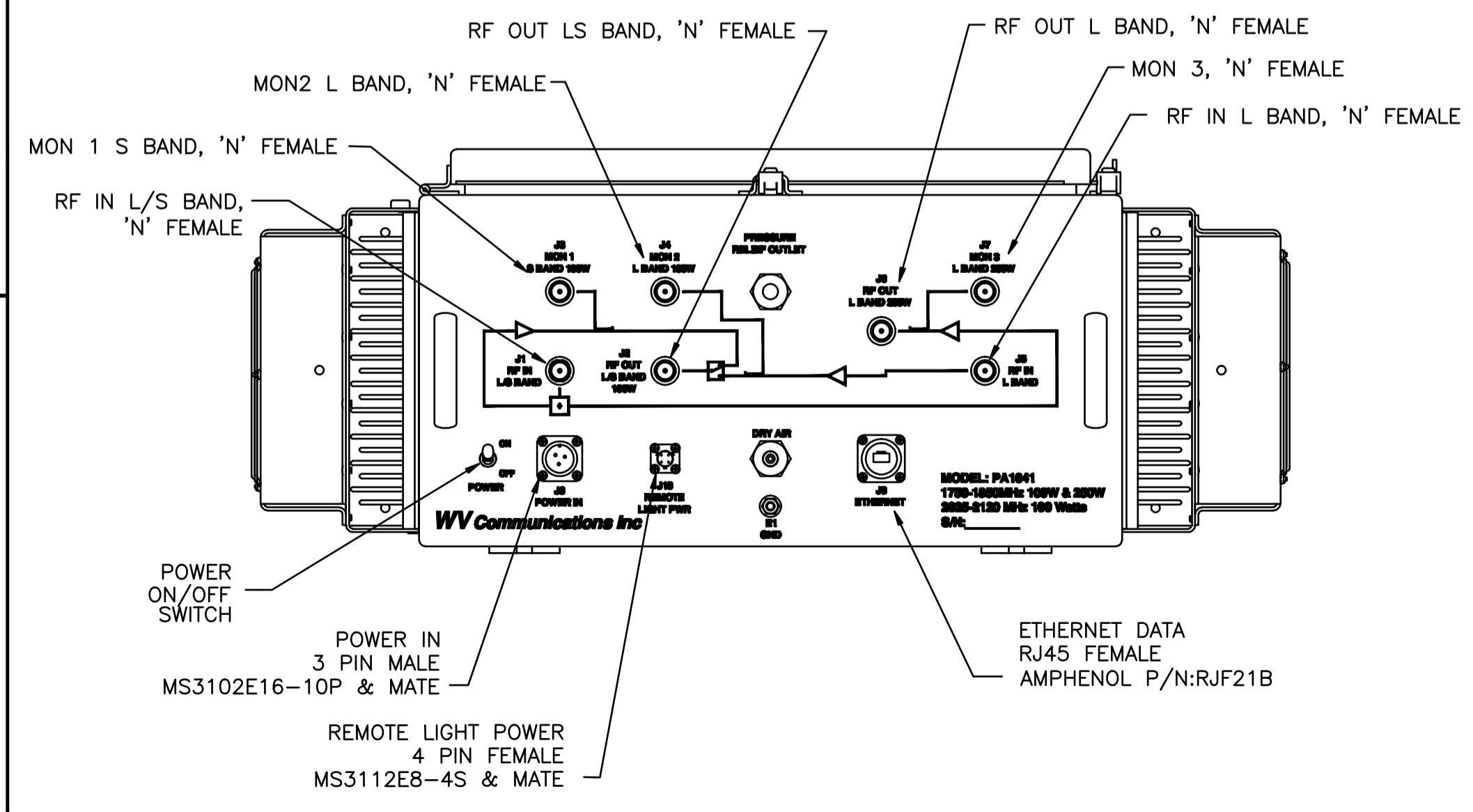
ETHERNET DATA CONNECTOR - J8	
PIN	DESCRIPTION
J8-1	TX+
J8-2	TX-
J8-3	RX+
J8-4	N/C
J8-5	N/C
J8-6	RX-
J8-7	N/C
J8-8	N/C

POWER CONNECTOR - J9	
PIN	DESCRIPTION
J9-A	115/230VAC HOT
J9-B	115/230VAC NEUTRAL
J9-C	SAFETY GROUND

REMOTE LIGHT PWR CONNECTOR-J10	
PIN	DESCRIPTION
J10-A	+24VDC
J10-B	SAFETY GROUND
J10-C	+24VDC RTN
J10-D	SAFETY GROUND

'L' BAND 250W Specifications:

OPERATING FREQUENCY RANGE: 1750-1850MHz
RF OUTPUT POWER: 250W (+54dBm) Minimum at 1dB Comp
RF OUT SAMPLE: -40dBc Nominal
RF OUTPUT PROTECTION: Protected to operate into any Load mismatch over RF Bandwidth & Phase without Damage
GAIN FLATNESS OVER RF BAND: ±1.0dB Maximum into 1.25:1 Load VSWR
GAIN FLATNESS OVER ANY 1MHz BAND: ±0.1dB Maximum
RF INPUT POWER: 0dBm Nominal
RF GAIN: 54dB Minimum
RF GAIN STABILITY: ±0.5dB/24Hr Maximum
RESIDUAL AM: -40dBc Minimum over 250Hz-4KHz
 -55dBc Minimum at 4KHz
 -60dBc Minimum at 500KHz
 -60dBc Minimum in 5MHz BW below Peak
 Deviation of ±2MHz
RESIDUAL FM: 0 to 20dB in 0.1dB Steps
RF ATTENUATION RANGE: +3dBm Maximum in ALC Mode
RF INPUT POWER W/O DAMAGE: 50Ω Nominal
INPUT AND OUTPUT IMPEDANCE: 1.5:1 Maximum (Ref 50Ω)
INPUT /OUTPUT VSWR: -80dBc Minimum
HARMONIC / SPURIOUS LEVELS:



SECTION A-A
 (TYP DETAIL OF MOUNTING TAB)
 (*FRONT TABS ONLY)

UNLESS OTHERWISE SPECIFIED: DIMENSIONS ARE IN INCHES. TOLERANCES ARE:
 FRACTIONS DECIMALS ANGLES HOLES
 ± 1/64 .XXX±.01 ±0°30' .XXX±.005
 MACHINED FINISH: 32 RMS REMOVE BURRS .005 MAX
 MATERIAL
 FINISH
 DO NOT SCALE DRAWING

APPROVALS	DATE
DRAWN TONY T.	8/14/09
CHECKED T.T.	8/14/09
MECH ENGR T.T.	8/14/09
ELEC ENGR J.T.	8/14/09
PRODUCTION A.M.	8/14/09
Q.A. D.B.	8/14/09

WV Communications 1176 Tourmaline Dr. Newbury Park, CA

AMPLIFIER
SSPA, OUTDOOR
 1750-1850MHz 100/250W 2025-2120MHz 100W

SIZE D	CAGE CODE 1GFQ7	DWG. NO. 050-50750	REV B
SCALE NONE	SHEET 1 OF 1		

900-50265	PA1041
NEXT ASSEMBLY	USED ON
APPLICATION	

DWG NO. 050-50750 REV B