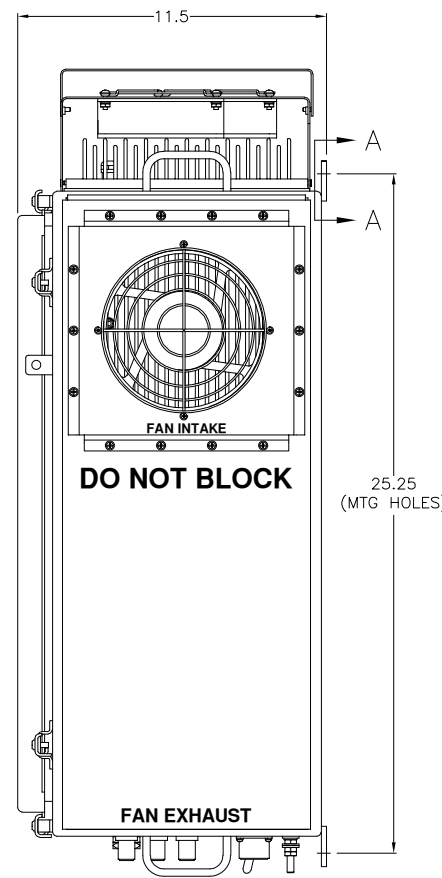
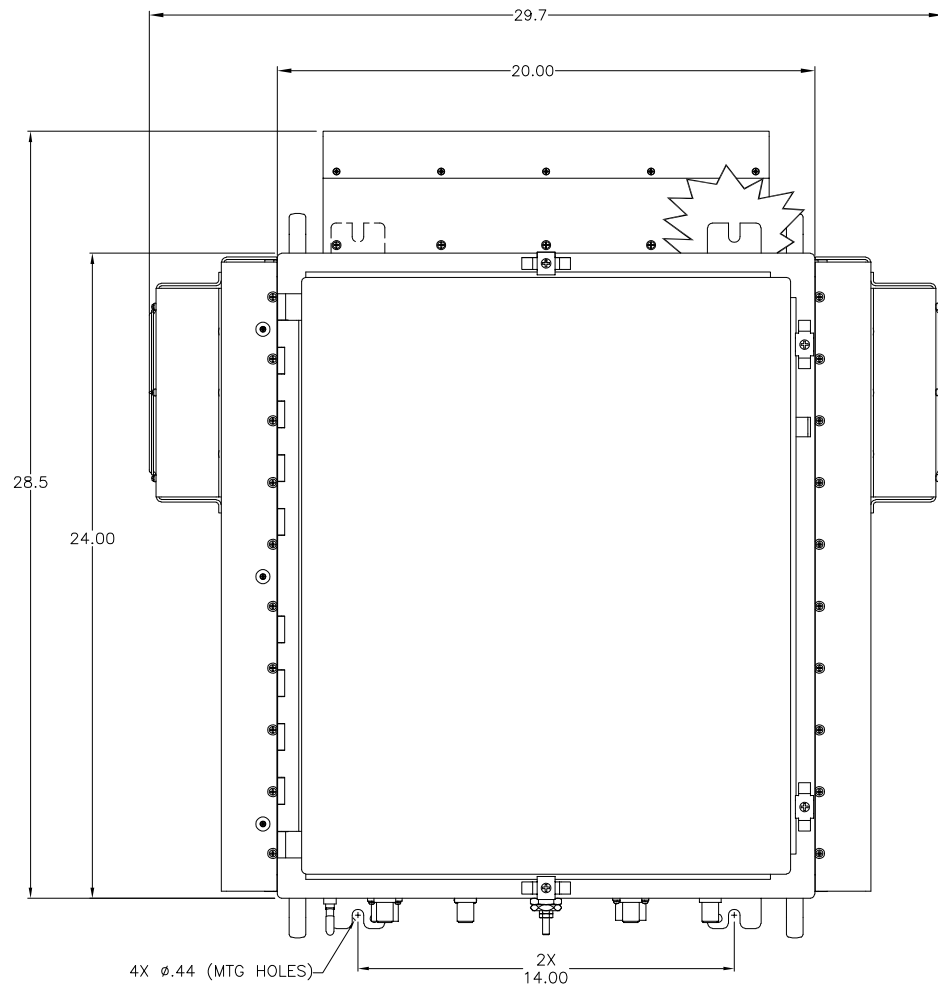


**** PROPRIETARY DATA ****
 THIS DOCUMENT CONTAINS DATA WHICH IS PROPRIETARY OR CONFIDENTIAL TO WV COMM (WV COMMUNICATIONS INCORPORATED). THIS DOCUMENT AND THE DATA CONTAINED HEREIN SHALL NOT BE USED, DUPLICATED, OR ALTERED WITHOUT THE EXPRESSED WRITTEN CONSENT OF WV COMM. ALL RIGHTS ARE RESERVED.

REVISIONS				
ZONE	REV	DESCRIPTION	DATE	APPROVED
	A	RELEASED	5/13/15	TT



'S' BAND 10W Specifications:

OPERATING FREQUENCY RANGE: 2200-2300MHz
RF OUTPUT POWER: 10W (+40dBm) Minimum P1dB Comp Pt. -40dBc Nominal
RF OUT SAMPLE: Protected to operate into any Load mismatch over RF Bandwidth & Phase without Damage
RF OUTPUT PROTECTION: ±2.0dB Maximum into 1.25:1 Load VSWR ±0.1dB Maximum
GAIN FLATNESS OVER RF BAND: 0dBm Nominal
GAIN FLATNESS OVER ANY 1MHz BAND: 40dB Minimum
RF INPUT POWER: ±0.5dB/24Hr Maximum
RF GAIN: -40dBc Minimum over 250Hz-4KHz -55dBc Minimum at 4KHz -60dBc Minimum at 500KHz
RF GAIN STABILITY: -60dBc Minimum in 5MHz BW below Peak Deviation of ±2MHz
RESIDUAL AM: 0 to 20dB in 0.1dB Steps +3dBm Maximum in AGC Mode
RESIDUAL FM: 50Ω Nominal
RF ATTENUATION RANGE: 1.5:1 Maximum (Ref 50Ω)
RF INPUT POWER W/O DAMAGE: -80dBc Minimum
INPUT /OUTPUT VSWR: Operating -20 to +50°C cold start
HARMONIC / SPURIOUS LEVELS: Storage -50 to +70°C
TEMPERATURE RANGES: Via Conduction/Built-in Forced Air Cooling
COOLING REQUIRED: Over Temperature, VSWR, Overdrive
AMPLIFIER PROTECTION: Via Internal Color LCD/Touchscreen Controller
LOCAL CONTROL: Ethernet UDP/IP via - RJ-45 Female
REMOTE CONTROL/MONITORING:

'L' BAND 100W Specifications:

OPERATING FREQUENCY RANGE: 1750-1850MHz
RF OUTPUT POWER: 100W (+50dBm) Minimum P1dB Comp Pt. -40dBc Nominal
RF OUT SAMPLE: Protected to operate into any Load mismatch over RF Bandwidth & Phase without Damage
RF OUTPUT PROTECTION: ±1.0dB Maximum into 1.25:1 Load VSWR ±0.1dB Maximum
GAIN FLATNESS OVER RF BAND: 0dBm Nominal
GAIN FLATNESS OVER ANY 1MHz BAND: 50dB Minimum
RF INPUT POWER: ±0.5dB/24Hr Maximum
RF GAIN: -40dBc Minimum over 250Hz-4KHz -55dBc Minimum at 4KHz -60dBc Minimum at 500KHz
RF GAIN STABILITY: -60dBc Minimum in 5MHz BW below Peak Deviation of ±2MHz
RESIDUAL AM: 0 to 20dB in 0.1dB Steps +3dBm Maximum
RESIDUAL FM: 50Ω Nominal
RF ATTENUATION RANGE: 1.5:1 Maximum (Ref 50Ω)
RF INPUT POWER W/O DAMAGE: -80dBc Minimum
INPUT /OUTPUT VSWR: Operating -20 to +50°C cold start
HARMONIC / SPURIOUS LEVELS: Storage -50 to +70°C
TEMPERATURE RANGES: Via Conduction/Built-in Forced Air Cooling
COOLING REQUIRED: Over Temperature, VSWR, Overdrive
AMPLIFIER PROTECTION: Via Internal Color LCD/Touchscreen Controller
LOCAL CONTROL: Ethernet UDP/IP via - RJ-45 Female
REMOTE CONTROL/MONITORING:

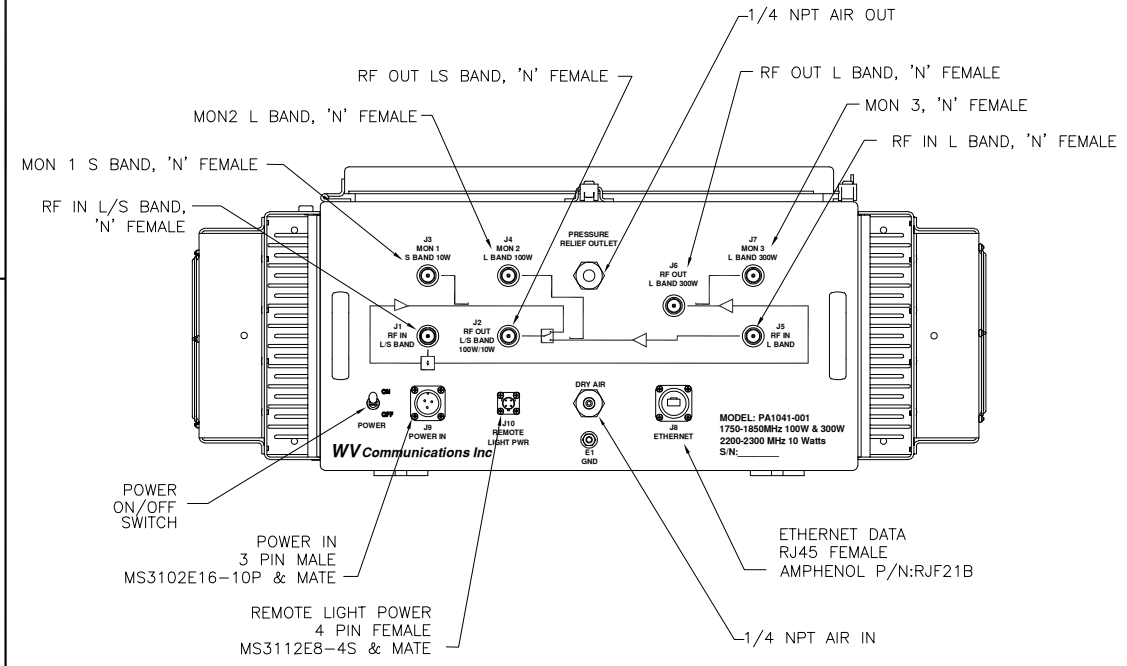
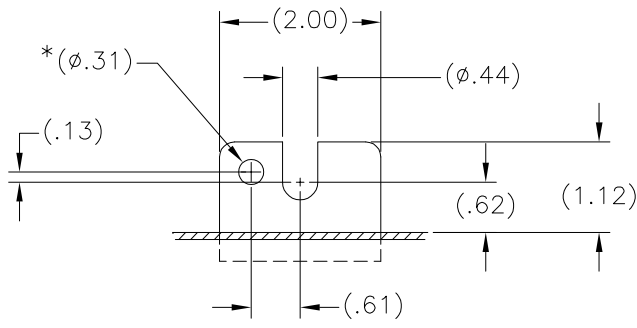
'L' BAND 300W Specifications:

OPERATING FREQUENCY RANGE: 1750-1850MHz
RF OUTPUT POWER: 300W (+54.77dBm) Minimum at P1dB Comp Pt. -40dBc Nominal
RF OUT SAMPLE: Protected to operate into any Load mismatch over RF Bandwidth & Phase without Damage
RF OUTPUT PROTECTION: ±1.0dB Maximum into 1.25:1 Load VSWR ±0.1dB Maximum
GAIN FLATNESS OVER RF BAND: 0dBm Nominal
GAIN FLATNESS OVER ANY 1MHz BAND: 54dB Minimum
RF INPUT POWER: ±0.5dB/24Hr Maximum
RF GAIN: -40dBc Minimum over 250Hz-4KHz -55dBc Minimum at 4KHz -60dBc Minimum at 500KHz
RF GAIN STABILITY: -60dBc Minimum in 5MHz BW below Peak Deviation of ±2MHz
RESIDUAL AM: 0 to 20dB in 0.1dB Steps +3dBm Maximum in ALC Mode
RESIDUAL FM: 50Ω Nominal
RF ATTENUATION RANGE: 1.5:1 Maximum (Ref 50Ω)
RF INPUT POWER W/O DAMAGE: -80dBc Minimum
INPUT /OUTPUT VSWR: Operating -20 to +50°C cold start
HARMONIC / SPURIOUS LEVELS: Storage -50 to +70°C
TEMPERATURE RANGES: Via Conduction/Built-in Forced Air Cooling
COOLING REQUIRED: Over Temperature, VSWR, Overdrive
AMPLIFIER PROTECTION: Via Internal Color LCD/Touchscreen Controller
LOCAL CONTROL: Ethernet UDP/IP via - RJ-45 Female
REMOTE CONTROL/MONITORING: 1psi Maximum, Internal 1.0psi pressure relief valve supplied
REMOTE LIGHT POWER: 24-32VDC /2A Maximum (Internally fused) automatically internally powered in any L/S Band
AC INPUT POWER: Amplifier is in "OnLine" state
 115VAC ±10% 47-63Hz, 1Ø 1.5KW Maximum

ETHERNET DATA CONNECTOR - J8	
PIN	DESCRIPTION
J8-1	TX+
J8-2	TX-
J8-3	RX+
J8-4	N/C
J8-5	N/C
J8-6	RX-
J8-7	N/C
J8-8	N/C

POWER CONNECTOR - J9	
PIN	DESCRIPTION
J9-A	115VAC HOT
J9-B	115VAC NEUTRAL
J9-C	SAFETY GROUND

REMOTE LIGHT PWR CONNECTOR-J10	
PIN	DESCRIPTION
J10-A	+24VDC
J10-B	SAFETY GROUND
J10-C	+24VDC RTN
J10-D	SAFETY GROUND



APPROVALS	DATE	WV Communications 1125-A Business Center Circle Newbury Park, CA
URI Y.	5/12/15	
T.T.	5/13/15	AMPLIFIER SSPA OUTDOOR 1750-1850MHz 100W/300W 2200-2300MHz 10W MODEL: PA1041-001
T.T.	5/13/15	
J.T.	5/13/15	SIZE D CAGE CODE 1GFQ7 DWG. NO. 050-50750-001 REV A
A.M.	5/13/15	
D.H.	5/13/15	SCALE NONE SHEET 1 OF 1

UNLESS OTHERWISE SPECIFIED: DIMENSIONS ARE IN INCHES. TOLERANCES ARE:
 FRACTIONS DECIMALS ANGLES HOLES
 ± 1/64 .001 ±0.001 ±0.001 ±0.001
 MACHINED FINISH: 32 RMS REMOVE BURRS .005 MAX
 MATERIAL
 FINISH
 APPLICATION DO NOT SCALE DRAWING

REV A 050-50750-001