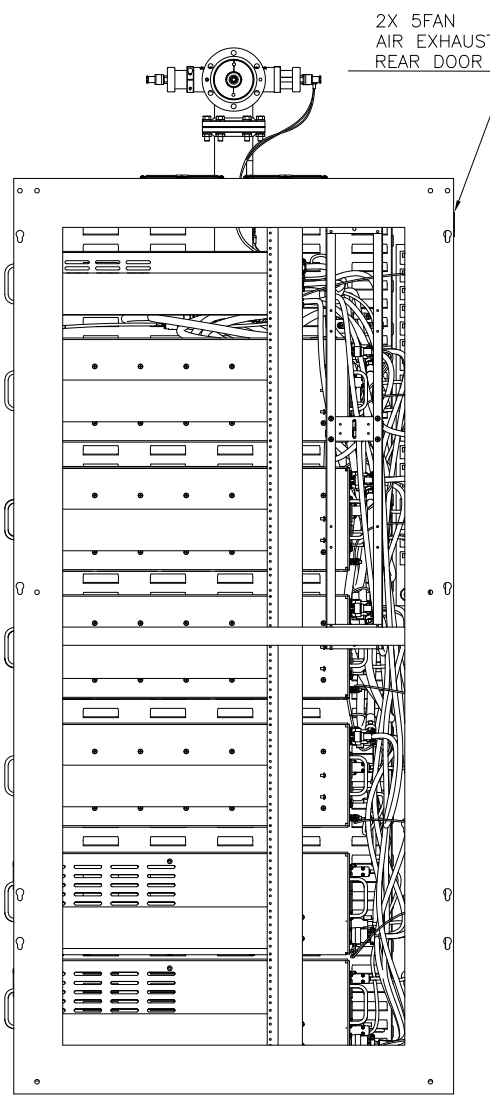
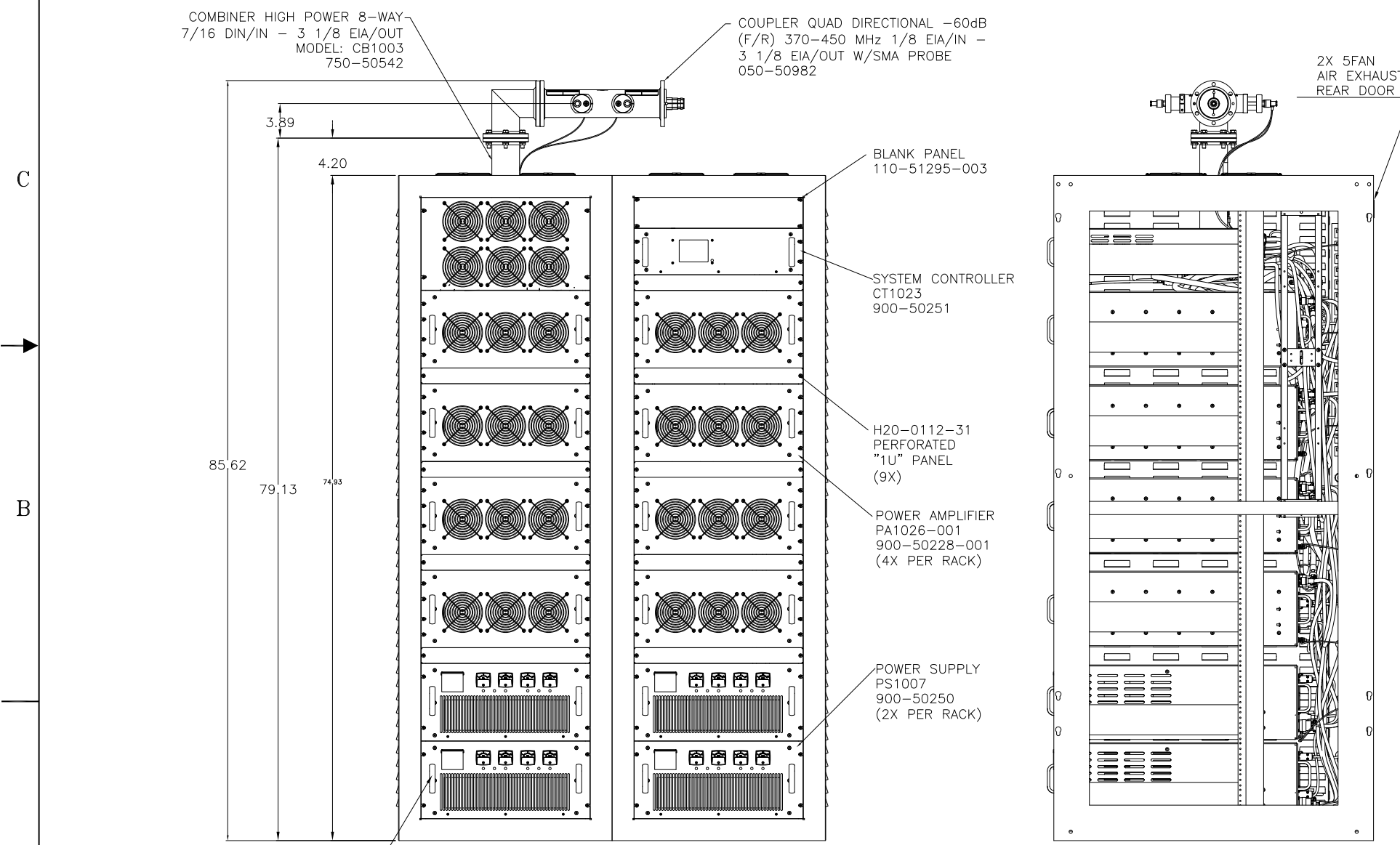
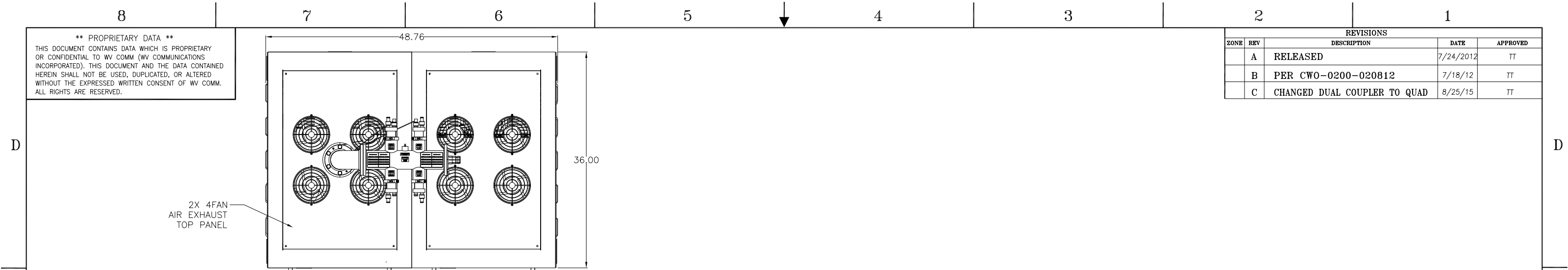


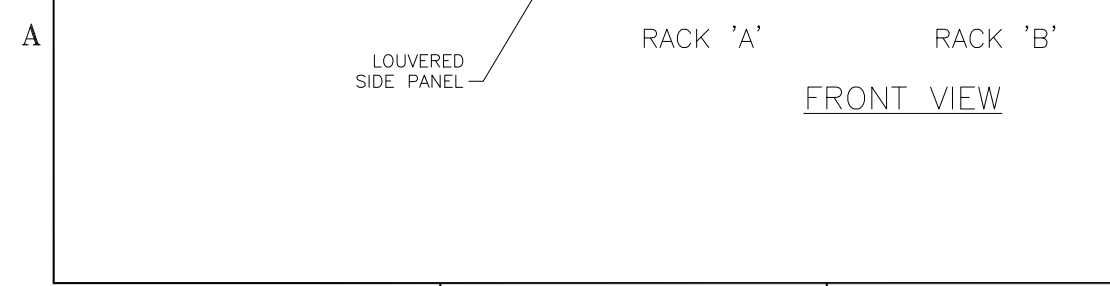
**** PROPRIETARY DATA ****
 THIS DOCUMENT CONTAINS DATA WHICH IS PROPRIETARY OR CONFIDENTIAL TO WV COMM (WV COMMUNICATIONS INCORPORATED). THIS DOCUMENT AND THE DATA CONTAINED HEREIN SHALL NOT BE USED, DUPLICATED, OR ALTERED WITHOUT THE EXPRESSED WRITTEN CONSENT OF WV COMM. ALL RIGHTS ARE RESERVED.

| REVISIONS | | | | |
|-----------|-----|------------------------------|-----------|----------|
| ZONE | REV | DESCRIPTION | DATE | APPROVED |
| | A | RELEASED | 7/24/2012 | TT |
| | B | PER CWO-0200-020812 | 7/18/12 | TT |
| | C | CHANGED DUAL COUPLER TO QUAD | 8/25/15 | TT |



SPECIFICATIONS SUMMARY

OPERATING FREQUENCY RANGES: 370-450MHz
RF OUTPUT POWER: 10KW Minimum at P1dB Compression Point
RF GAIN: 75dB nominal
SMALL SIGNAL GAIN FLATNESS: ALC: ±1.5dB Maximum into 1.05:1 VSWR
 VVA: ±2.5dB Maximum into 1.05:1 VSWR
RF INPUT POWER: -5dBm to +3dBm
MAXIMUM RF INPUT POWER: +10dBm Maximum W/O Damage
INPUT AND OUTPUT IMPEDANCE: 50Ω Nominal
INPUT VSWR: 1.50:1 Maximum (Ref 50Ω)
HARMONIC SIGNAL LEVELS: 60dBc Minimum Integral Low Pass Filter from 740 - 2700MHz
SPURIOUS SIGNAL LEVELS: 55dBc Minimum from 370-450MHz
 80dBc Minimum from 1-370MHz & 450-3000MHz
RF OUTPUT CONNECTOR: 3 1/8" EIA Flange
OUTPUT POWER CONTROL: 23dB Minimum
RF OUTPUT TURN-ON-TIME: 50 mSec Maximum after RF power received
SWITCHING TIME: 50 mSec Maximum between any of the Outputs
LOCAL CONTROL: Via Color Touchscreen LCD
REMOTE CONTROL: Via RS-232 & Ethernet (UDP)
RF OUTPUT COUPLED PORTS: -70dBc Forward and Reflected
RF OUTPUT SAMPLE PORT: -70dBc
COOLING: Forced air via HPA integral Front Panel Intake and Rear Panel Exhaust Fans, Rack-Front/Top Fans
OVER TEMPERATURE PROTECTION: 8-Way Combiner Surface - 110°C
 Load - Per Bird Model 8645B115
TEMPERATURE RANGES: Operating - +35 to +100°F
 Storage - +20 to +120°F
RELATIVE HUMIDITY Operating - 20% to 60% (Non-Condensing)
 Storage - 10% to 90% (Non-Condensing)
ALTITUDE: MSL to 70,000 Ft
AC INPUT POWER: 180-264VAC, 47-63Hz 3 Phase, Delta 4 Wire, at 28KW Maximum



SIDE VIEW
 (SIDE PANEL REMOVED)

| UNLESS OTHERWISE SPECIFIED: DIMENSIONS ARE IN INCHES. TOLERANCES ARE: | | APPROVALS | | DATE | WV Communications 1176 Tourmaline Dr. Newbury Park, CA |
|---|----------|-----------------------|----------|------|--|
| FRACTIONS | DECIMALS | ANGLES | Holes | | |
| ± 1/64 | .XXX-01 | ±0°30' | .XXX-005 | | AMPLIFIER SYSTEM 370-450 MHz 10KW MODEL: SYS1018 |
| | .XXX-005 | | .XXX-003 | | |
| | | | .XXX-001 | | |
| | | | | | |
| | | | | | |
| MACHINED FINISH: 32 RMS REMOVE BURRS .005 MAX | | FINISH | | | SIZE CAGE CODE DWG. NO. REV D 1GFQ7 050-50739 C |
| MATERIAL | | Q.A. | | | |
| 900-50260 | SYS1018 | NEXT ASSEMBLY USED ON | | | SCALE NONE SHEET 1 OF 2 |
| APPLICATION | | DO NOT SCALE DRAWING | | | |

REV. C 050-50739
 DC-P004-0011-3, REV. C, 06/08