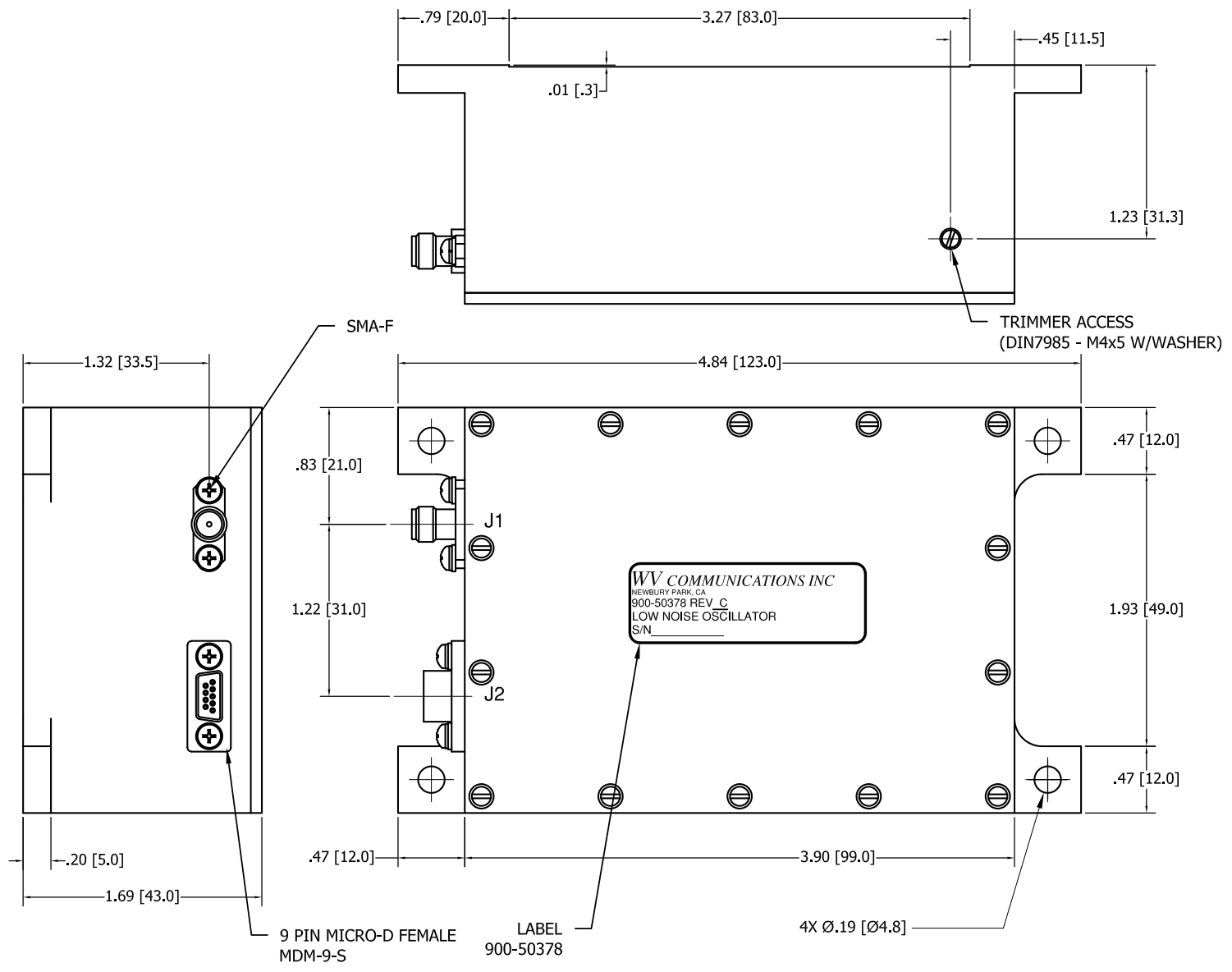


**** PROPRIETARY DATA ****
 THIS DOCUMENT CONTAINS DATA WHICH IS PROPRIETARY OR CONFIDENTIAL TO WV COMM (WV COMMUNICATIONS INCORPORATED). THIS DOCUMENT AND THE DATA CONTAINED HEREIN SHALL NOT BE USED, DUPLICATED, OR ALTERED WITHOUT THE EXPRESSED WRITTEN CONSENT OF WV COMM. ALL RIGHTS ARE RESERVED.

REVISIONS				
ZONE	REV	DESCRIPTION	DATE	APPROVED
	A	RELEASED	6/10/2015	TT
	B	UPDATED SPEC AND LABEL	11/15/16	TT/JQ/UY

D
C
B
A



ELECTRICAL CHARACTERISTICS			
NOMINAL OUTPUT FREQUENCY:	Fn	120 MHz	
OVERALL FREQUENCY STABILITY: (incl. temperature, aging 1 year, retrace)		< ± 4.10-8	
FREQUENCY STABILITY vs TEMPERATURE:	[-20, +75] °	< ± 2.10-8	
FREQUENCY STABILITY vs SUPPLY VOLTAGE:	(+15 V ± 5%)	< ± 5.10-9	
FREQUENCY STABILITY vs LOAD:	(50Ω ± 10%)	< ± 5.10-9	
LONG TERM STABILITY:	FIRST YEAR	< ± 2.10-8	
	NEXT YEARS	< ± 1.5.10-8	
PHASE NOISE:		static	under vibration [1]
	10 Hz	< -85 dBc/Hz	< -55 dBc/Hz
	100 Hz	< -115 dBc/Hz	< -55 dBc/Hz
	1 kHz	< -145 dBc/Hz	< -100 dBc/Hz
	10 kHz	< -165 dBc/Hz	< -165 dBc/Hz
	100 kHz	< -168 dBc/Hz	< -168 dBc/Hz
	1MHz	< -169 dBc/Hz	< -169 dBc/Hz
g-SENSITIVITY:	s/g, 3 axes	< ± 5.10-10/g	
WARM UP TIME (FCY):	Temperature	-20°C	+25°C
		< 180 s	< 120 s
CONSUMPTION:		Warm-up	< 6,75 W
		Steady state	< 3,30 W
FREQUENCY ADJUSTMENT: (internal trimmer)	ΔF/F	± 4.10-7 < dF/F < ± 5.10-7	
RF OUTPUT:	TYPE	SINE WAVE	
	LEVEL	+10 dBm ± 1dB	
	HARMONICS	< -30 dBc	
	NON HARMONICS	< -90 dBc	
	VSWR (120MHz ±2,5MHz, +25°C)	< 1,5 : 1	
	SPURIOUS	0,1>1kHz	1>10kHz
		< -80 dBc	< -100 dBc
	SPURIOUS vs SUPPLY VOLTAGE RIPPLE (10mVpp, DC to 2MHz)	10kHz>20MHz	< -120 dBc
PLL LOCK INDICATOR	RS-422 Type	Pll locked: "0" status Pll Unlocked: "1" status	

ENVIRONMENT		
TEMPERATURE:	STORAGE:	[-30, +85] °C
	OPERABLE:	[-30, +85] °C
	OPERATING:	[-20, +75] °C
LIFE PROFILE:	10 YEARS	
SUPPLY VOLTAGE:	+15 V ± 5 %	max. ripple 10mVpp, DC to 2MHz
LOAD:	50Ω ± 10 %	
VIBRATION: (Random) [1]	2Hz to 4Hz:	0,30 g ² /Hz
	10Hz to 40Hz:	0,06 g ² /Hz
	62Hz:	1,25 g ² /Hz
	100Hz to 300Hz:	0,30 g ² /Hz
	1000Hz:	0,02 g ² /Hz
SHOCK:	40 g / 18 ms	3 x 6 shock
ALTITUDE:	< 5000 m	

CONNECTOR TABLE	
J1	SMA-F: RF output
J2	MDM, 9pins connector: 1- Vcc - +15Vdc 2- 0V Gnd 3- PLL lock + 4- PLL lock -

UNLESS OTHERWISE SPECIFIED: DIMENSIONS ARE IN INCHES. TOLERANCES ARE:				APPROVALS		DATE	WV Communications 1125-A Business Center Circle Newbury Park, CA
FRACTIONS	DECIMALS	ANGLES	HOLE	DRAWN			
± 1/64	.XXX1	±0°30'	.XXX1	JQ		9/7/16	120.00MHz PHASE LOCKED OSCILLATOR LOW NOISE P/N 900-50378
.XXX2	.005		.XXX1	CHECKED	TT	11/19/12	
				MECH ENGR	TT	11/19/12	
				ELEC ENGR	JT	11/19/12	
				PRODUCTION	AM	11/19/12	
900-50378							SIZE CAGE CODE DWG. NO. REV D 1GFQ7 050-50914 B
NEXT ASSEMBLY	USED ON						SCALE NONE SHEET 1 OF 1
APPLICATION	DO NOT SCALE DRAWING			Q.A.	WO	11/19/12	

D
C
B
A

REV. B
DWG. NO. 050-50914