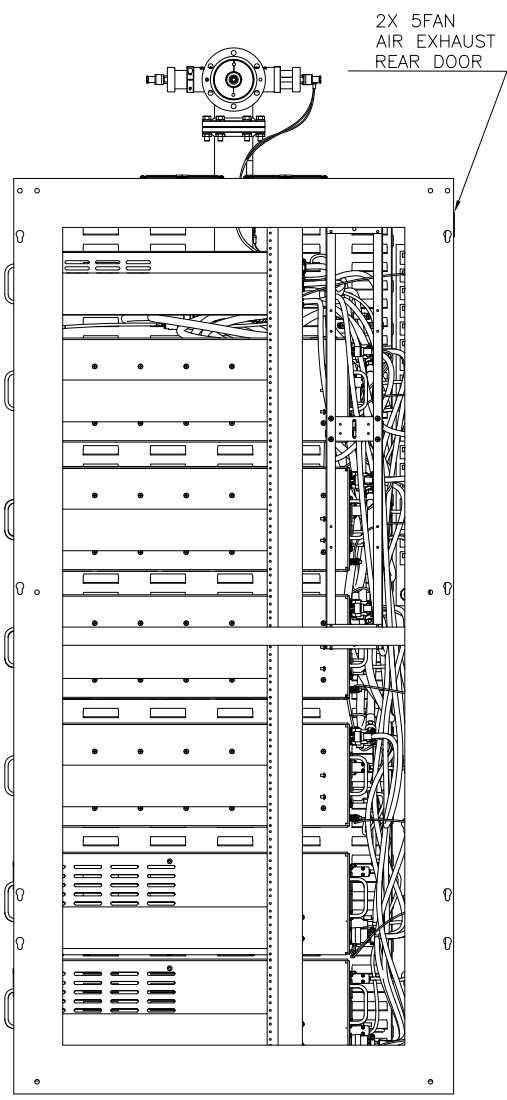
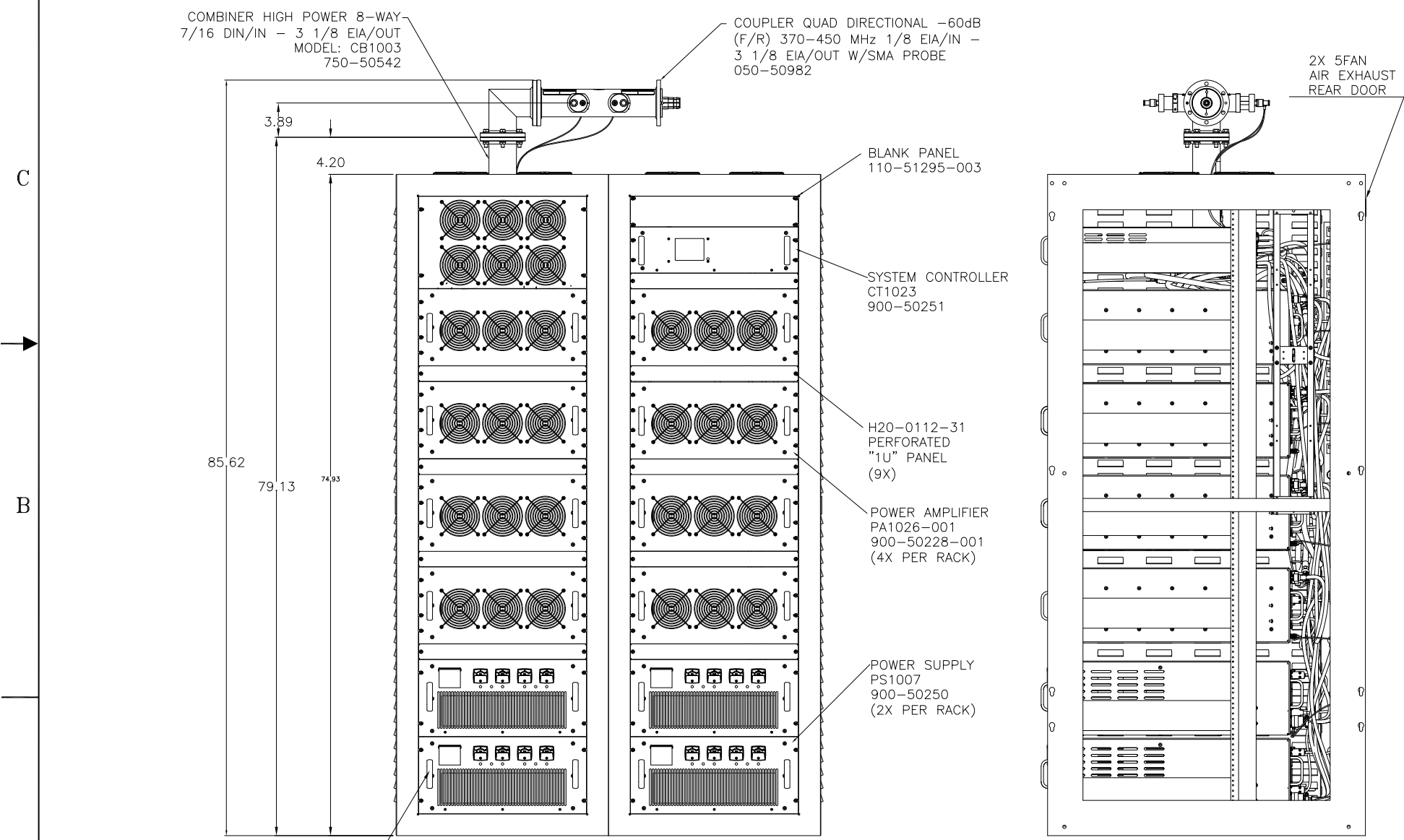
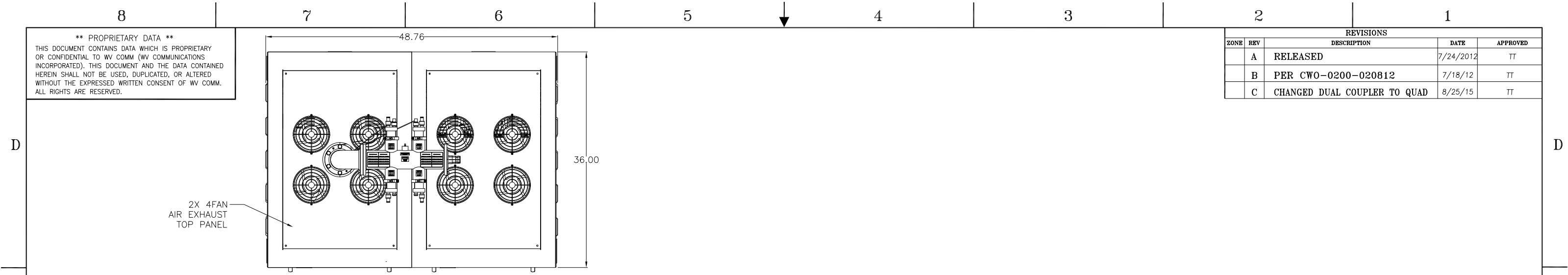


**\*\* PROPRIETARY DATA \*\***  
 THIS DOCUMENT CONTAINS DATA WHICH IS PROPRIETARY OR CONFIDENTIAL TO WV COMM (WV COMMUNICATIONS INCORPORATED). THIS DOCUMENT AND THE DATA CONTAINED HEREIN SHALL NOT BE USED, DUPLICATED, OR ALTERED WITHOUT THE EXPRESSED WRITTEN CONSENT OF WV COMM. ALL RIGHTS ARE RESERVED.

REVISIONS				
ZONE	REV	DESCRIPTION	DATE	APPROVED
	A	RELEASED	7/24/2012	TT
	B	PER CWO-0200-020812	7/18/12	TT
	C	CHANGED DUAL COUPLER TO QUAD	8/25/15	TT



SIDE VIEW  
(SIDE PANEL REMOVED)

**SPECIFICATIONS SUMMARY**

**OPERATING FREQUENCY RANGES:** 370-450MHz  
**RF OUTPUT POWER:** 10KW Minimum at P1dB Compression Point  
**RF GAIN:** 75dB nominal  
**SMALL SIGNAL GAIN FLATNESS:** ALC: ±1.5dB Maximum into 1.05:1 VSWR  
 VVA: ±2.5dB Maximum into 1.05:1 VSWR  
**RF INPUT POWER:** -5dBm to +3dBm  
**MAXIMUM RF INPUT POWER:** +10dBm Maximum W/O Damage  
**INPUT AND OUTPUT IMPEDANCE:** 50Ω Nominal  
**INPUT VSWR:** 1.50:1 Maximum (Ref 50Ω)  
**HARMONIC SIGNAL LEVELS:** 60dBc Minimum Integral Low Pass Filter from 740 - 2700MHz  
**SPURIOUS SIGNAL LEVELS:** 55dBc Minimum from 370-450MHz  
 80dBc Minimum from 1-370MHz & 450-3000MHz  
**RF OUTPUT CONNECTOR:** 3 1/8" EIA Flange  
**OUTPUT POWER CONTROL:** 23dB Minimum  
**RF OUTPUT TURN-ON-TIME:** 50 mSec Maximum after RF power received  
**SWITCHING TIME:** 50 mSec Maximum between any of the Outputs  
**LOCAL CONTROL:** Via Color Touchscreen LCD  
**REMOTE CONTROL:** Via RS-232 & Ethernet (UDP)  
**RF OUTPUT COUPLED PORTS:** -70dBc Forward and Reflected  
**RF OUTPUT SAMPLE PORT:** -70dBc  
**COOLING:** Forced air via HPA integral Front Panel Intake and Rear Panel Exhaust Fans, Rack-Front/Top Fans  
**OVER TEMPERATURE PROTECTION:** 8-Way Combiner Surface - 110°C  
 Load - Per Bird Model 8645B115  
**TEMPERATURE RANGES:** Operating - +35 to +100°F  
 Storage - +20 to +120°F  
**RELATIVE HUMIDITY**  
 Operating - 20% to 60% (Non-Condensing)  
 Storage - 10% to 90% (Non-Condensing)  
**ALTITUDE:** MSL to 70,000 Ft  
**AC INPUT POWER:** 180-264VAC, 47-63Hz 3 Phase, Delta 4 Wire, at 28KW Maximum

FRONT VIEW  
 RACK 'A' RACK 'B'  
 LOUVERED SIDE PANEL

APPROVALS		DATE
DRAWN	TONY T.	02/19/10
CHECKED	TONY T.	02/22/10
MECH ENGR	T.T.	02/22/10
ELEC ENGR	J.T.	02/22/10
PRODUCTION	A.M.	02/22/10
Q.A.	D.B.	02/22/10

<b>WV Communications</b>		1176 Tourmaline Dr. Newbury Park, CA	
<b>AMPLIFIER SYSTEM</b> 370-450 MHz 10KW MODEL: SYS1018			
SIZE	CAGE CODE	DWG. NO.	REV
D	1GFQ7	050-50739	C
SCALE	NONE	SHEET 1 OF 2	

UNLESS OTHERWISE SPECIFIED: DIMENSIONS ARE IN INCHES. TOLERANCES ARE:  
 FRACTIONS DECIMALS ANGLES HOLES  
 ± 1/64 .XXX.01 ±0°30' .XXX+.005  
 .XXX.005 .XXX+.003  
 MACHINED FINISH: 32 RMS  
 REMOVE BURRS .005 MAX  
 MATERIAL  
 FINISH  
 900-50260 SYS1018  
 NEXT ASSEMBLY USED ON  
 APPLICATION DO NOT SCALE DRAWING

REV. C 050-50739