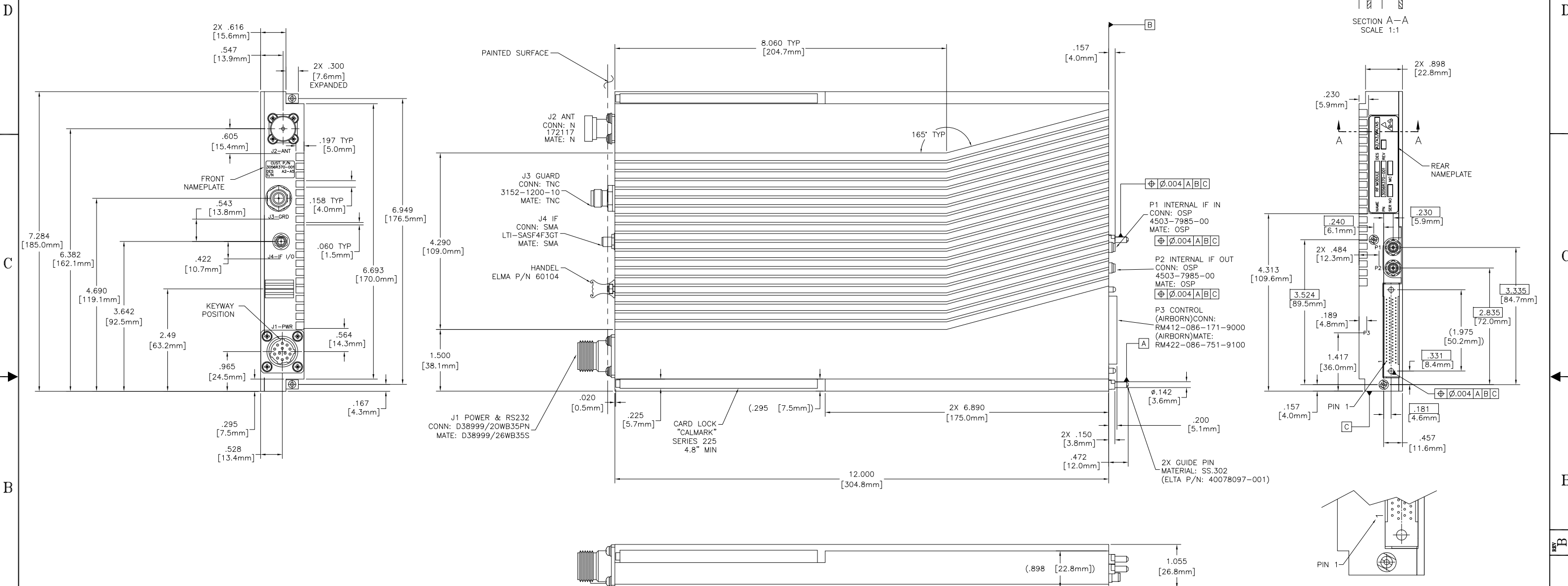


**** PROPRIETARY DATA ****
 THIS DOCUMENT CONTAINS DATA WHICH IS PROPRIETARY OR CONFIDENTIAL TO WV COMM (WV COMMUNICATIONS INCORPORATED). THIS DOCUMENT AND THE DATA CONTAINED HEREIN SHALL NOT BE USED, DUPLICATED, OR ALTERED WITHOUT THE EXPRESSED WRITTEN CONSENT OF WV COMM. ALL RIGHTS ARE RESERVED.

REVISIONS				
ZONE	REV	DESCRIPTION	DATE	APPROVED
	A	RELEASED	9/3/2008	TT
	B	REVISED PER CUST DWG 3056R372-001 "B"	12/09/09	TT



4. FUNCTIONAL REQUIREMENTS AND ENVIRONMENTAL CONDITIONS ACCORDING TO SPEC.
3. WEIGHT: 1.5 Kg. max.
2. PRIMER PAINTING:
 -EPOXY POLYAMIDE/STRONTIUM CHROMATE PER MIL-P-23377G, TYPE I CLASS C
 -THICKNESS 15-25 mkm.
 2.1 TOP COAT: POLYURETHANE-POLYESTER PER MIL-PRF-85285C, TYPE 1 THICKNESS: 40-50 mkm.
 -HOLES & C-SINK WITHOUT PAINTING.
 -OVERALL DRY THICKNESS: 55-75 mkm.
 2.2 COLOUR: GRAY, PER FED-STD-595B COLOUR NO 26251.
1. FINISH:
 1.1 METAL TREATMENT:
 -CHEMICAL CONVERSION COATING PER MIL-C-5541E, CLASS 1A.
 -APPLICATION PER IAI P.S. 23.3200.2.
- NOTES (UNLESS OTHERWISE SPECIFIED):

P3 CONTROL					
P1	D_GND	P25	N/C	P51	RFM_CLK_OutH
P2	D_GND	P27	RF_ON/OFF	P52	RFM_CLK_OutL
P3	A_GND	P28	Control_TXH	P53	RF_Sys_Clk_InpH
P4	A_GND	P29	Control_TXL	P54	RF_Sys_Clk_InpL
P5	RF SHAPE	P36	CTRL_CLK_RXH	P66	D_GND
P13	GRD_RX	P37	CTRL_CLK_RXL	P75	N/C
P15	RF Module Exist	P38	Control_RXH	P78	N/C
P17	PTT RF	P39	Control_RXL	P83	D_GND
P18	PSRF_ON/OFF	P44	D_GND	P84	GUARD AUDIO OUT
P21	Reset	P48	CTRL_CLK_TXH	P85	A_GND
P23	D_GND	P49	CTRL_CLK_TXL	P86	A_GND

PINS NOT USED: 6 THRU 12, 14, 16, 19, 20, 22, 24, 26, 30 THRU 35, 40 THRU 43, 45, 46, 47, 50, 55 THRU 65, 67 THRU 74, 76, 77, 79 THRU 82

J1 POWER & RS232	
P1	28Vdc
P2	28Vdc
P3	28Vdc
P4	28Vdc
P5	28V_RTN
P6	28V_RTN
P7	D_GND
P8	ATE_Ctrl_RX
P9	ATE_Ctrl_TX
P10	Blank In
P11	28V_RTN
P12	28V_RTN
P13	N/C

UNLESS OTHERWISE SPECIFIED: DIMENSIONS ARE IN INCHES. TOLERANCES ARE:	APPROVALS	DATE
± 1/64 .XXX.01 ±0°30' .XXX+.005 MACHINED FINISH: 32 RMS REMOVE BURRS .005 MAX	DRAWN G. GODDARD CHECKED TONY T. MECH ENGR GG ELEC ENGR JT PRODUCTION AM Q.A. DB	21NOV06 21NOV06 21NOV06 21NOV06
900-50186 FC1003		
NEXT ASSEMBLY USED ON		
APPLICATION	DO NOT SCALE DRAWING	

WV Communications 1176 Tourmaline Dr. Newbury Park, CA

RADIO FREQUENCY CONTROLLER (RFC)
 (3056R370-001)

SIZE D	CAGE CODE 1GFQ7	DWG. NO. 050-50556	REV B
SCALE NONE	SHEET 1 OF 1		

DWG NO. 050-50556 REV B