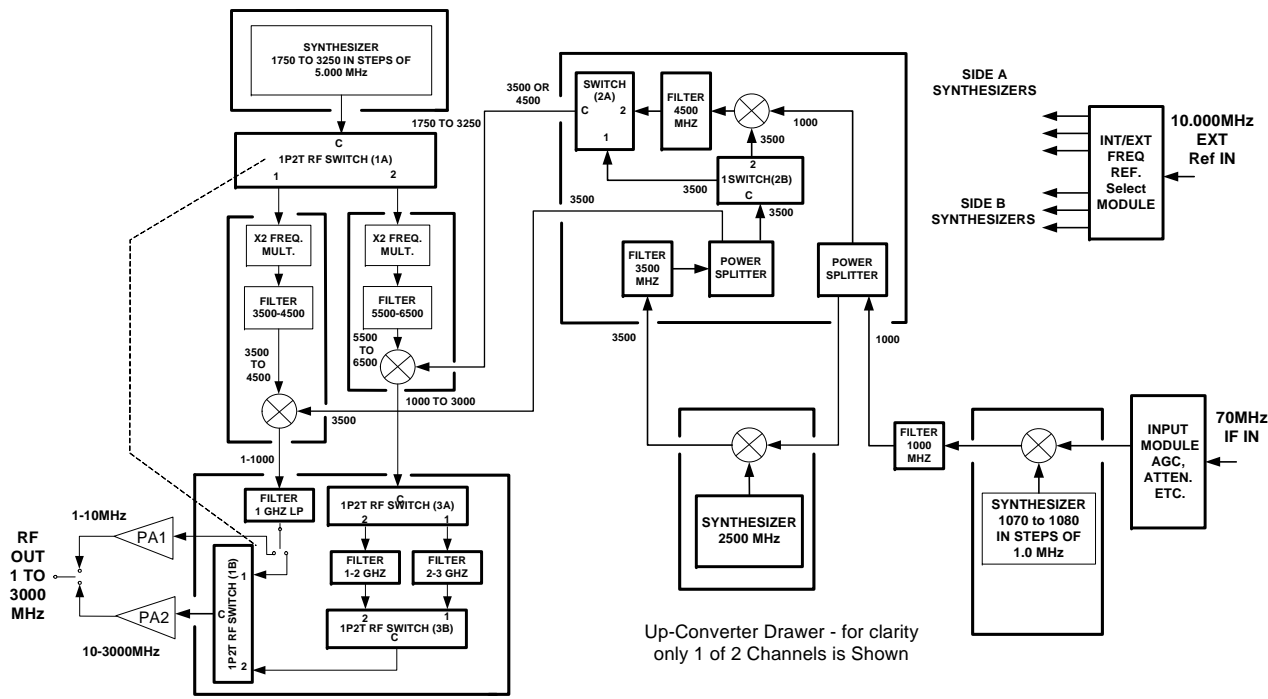
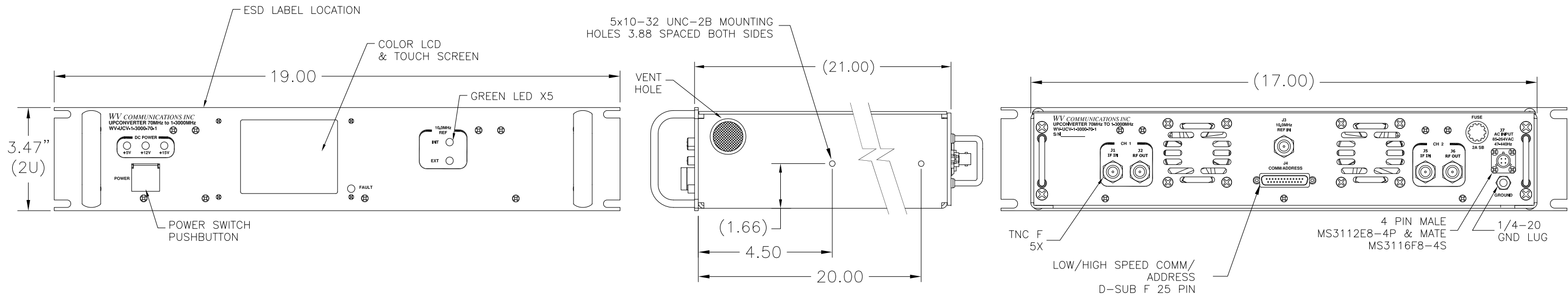


**\*\* PROPRIETARY DATA \*\***  
 THIS DOCUMENT CONTAINS DATA WHICH IS PROPRIETARY OR CONFIDENTIAL TO WV COMM (WV COMMUNICATIONS INCORPORATED). THIS DOCUMENT AND THE DATA CONTAINED HEREIN SHALL NOT BE USED, DUPLICATED, OR ALTERED WITHOUT THE EXPRESSED WRITTEN CONSENT OF WV COMM. ALL RIGHTS ARE RESERVED.

REVISIONS				
ZONE	REV	DESCRIPTION	DATE	APPROVED
	A	RELEASED	3/5/03	TT
	B	Added LCD Display	01-21-04	J.M.
	C	ADDED J7 TABLE	01-21-04	J.M.
	D	ADDED FAULT LED	5-10-05	J.M.
	E	Conversion Gain was 40 is 30	03-21-05	J.M.
	F	CHANGED POWER SWITCH	18MAR09	GG
	G	CHANGED POWER SWITCH PER ECO 10-0013	24MAR10	GG
	H	ADDED ESD LABEL CALL OUT	04/28/11	TT
	J	3.47 WAS 3.5 -CHG PER CWO-0197-012612	01/26/12	TT



J5 COMMAND/ADDRESS	
Pin #	Designation
1	GND
2	RS422-Rx-
3	RS422-Tx-
4	HS Start-
5	HS Data-
6	HS Clk -
7	GND
8	Spare
9	Spare
10	Spare
11	Addr1
12	Addr2
13	Addr3
14	422Rx +
15	Spare
16	422Tx +
17	HS Start +
18	HS Data +
19	HS Clk +
20	Spare
21	GND
22	GND
23	GND
24	GND
25	GND

**DUAL CHANNEL CONVERTER SPECIFICATIONS:**

**IF INPUT FREQUENCY:** 70 ± 12.5 MHz

**RF OUTPUT FREQUENCY RANGE:** 1-3000MHz

**RF INPUT POWER:** 0dBm Maximum

**RF OUTPUT FLATNESS:** ± 0.5dB Maximum (± 0.25dB Typical)

**RF OUTPUT POWER:** +22dBm Minimum at 1dB Gain Compression

**LO FREQUENCY STEPS:** 1.00MHz Nominal

**CONVERSION GAIN:** 30dB Nominal (-20 in, +10dBm out typical)

**GAIN ADJUSTMENT RANGE:** 60dB Nominal

**GAIN ADJUSTMENT STEPS:** 1dB Nominal

**NOISE FIGURE:** 20dB Maximum

**TUNING TIME:** 100uSec Maximum (including Digital Command timing in High Speed Bus Communication Mode)

**HARMONICS:** 40dBc Minimum

**NOISE FLOOR:** -70dBm Minimum

**SPURIOUS OUTPUTS:** 70dBc Minimum (signal related Non Harmonic)

**CARRIER STABILITY:** ± 2X 10<sup>-6</sup> Maximum over 0-55 °C

**PHASE NOISE AT 1.0KHz OFFSET:** -95dBc Maximum

**EXTERNAL 10.0MHz REFERENCE:** Auto switch to internal 10.00MHz when the External 10.00MHz Reference is not present

**COMMAND / CONTROL:** 0dBm ± 3dB / 50 Ohm  
 Front Panel Color LCD Touchscreen; Remote RS-232C/422/485 and High Speed 10MB/Sec Proprietary Serial Bus

**WEIGHT:** 25 Lbs. Maximum

**INPUT VOLTAGE:** 85-264VAC at 2/1A. Single Phase 47-440 Hz Auto select

**AC INPUT POWER:** 200W Maximum

**FRONT PANEL FINISH:** Black per FED-STD 595 27038

J7 AC INPUT	
PIN	DESIGNATION
A	LIVE
B	NEUTRAL
C	GND, CHASSIS
D	N/C

UNLESS OTHERWISE SPECIFIED: DIMENSIONS ARE IN INCHES. TOLERANCES ARE: FRACTIONS DECIMALS ANGLES HOLES ± 1/64 .XXX.01 20°30' .XXX.005 .XXX.005 .XXX.005 .XXX.005 MACHINED FINISH: 32 RMS REMOVE BURRS .005 MAX		APPROVALS	DATE	<b>WV Communications</b> 1176 Tourmaline Dr. Newbury Park, CA
DRAWN G.GODDARD 3/5/03		CHECKED J.MEDINA 01-21-04		
MATERIAL		MECH ENGR GG 01-21-04		<b>DUAL CHANNEL CONVERTER</b> 70.0MHz to 1-3000MHz WV-UCV-1-3000-70-1
FINISH		ELEC ENGR JT 01-21-04		
900-50134-002		PRODUCTION AM 01-21-04		SIZE CAGE CODE DWG. NO. REV
NEXT ASSEMBLY USED ON		Q.A. UY 01-21-04		D 1GFQ7 050-50380 J
APPLICATION	DO NOT SCALE DRAWING			SCALE NONE SHEET 1 OF 1