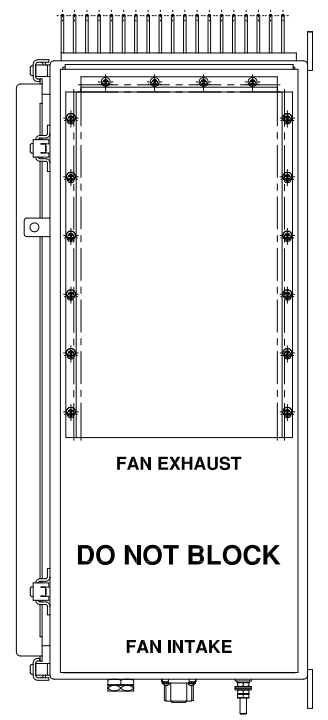
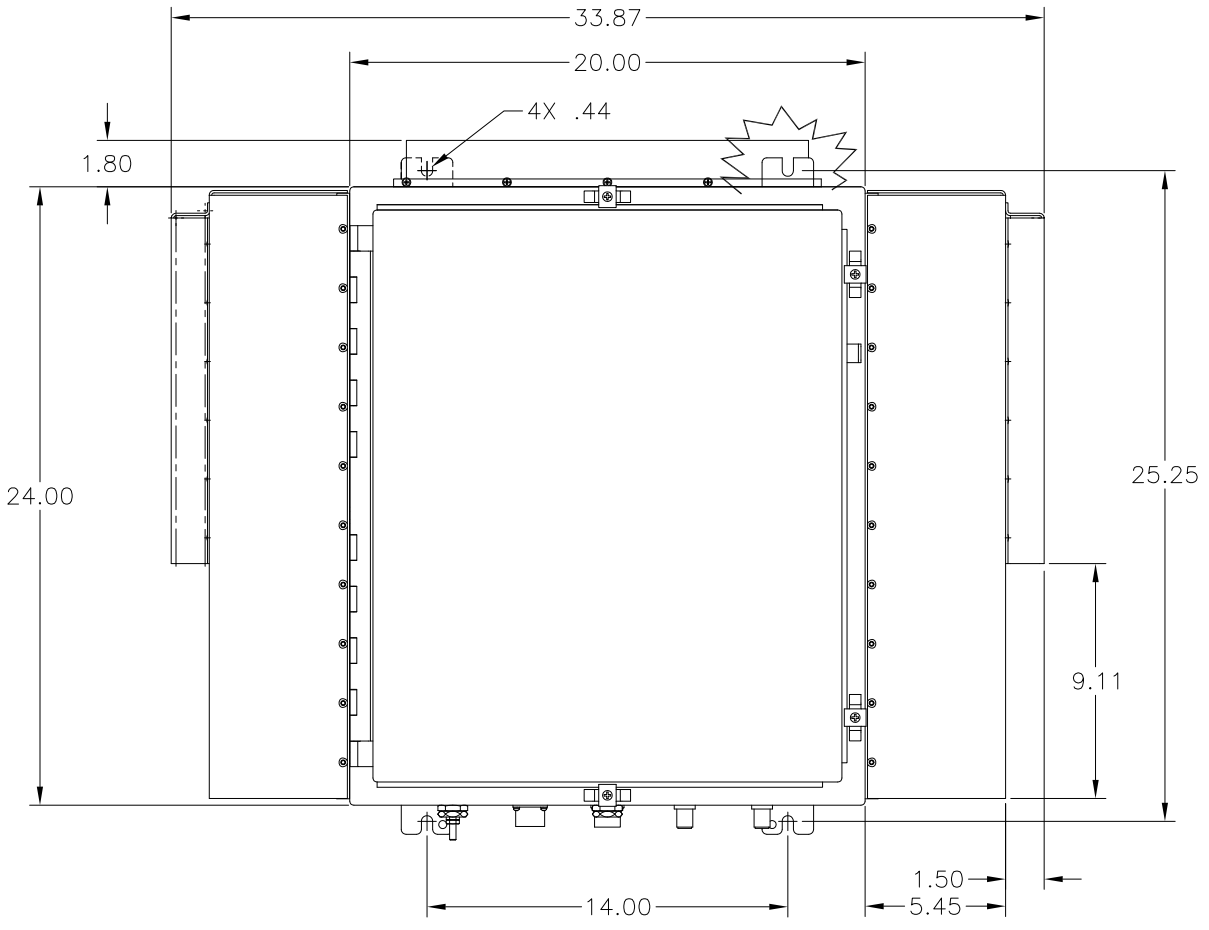


8 7 6 5 4 3 2 1

**** PROPRIETARY DATA ****
 THIS DOCUMENT CONTAINS DATA WHICH IS PROPRIETARY OR CONFIDENTIAL TO WV COMM (WV COMMUNICATIONS INCORPORATED). THIS DOCUMENT AND THE DATA CONTAINED HEREIN SHALL NOT BE USED, DUPLICATED, OR ALTERED WITHOUT THE EXPRESSED WRITTEN CONSENT OF WV COMM. ALL RIGHTS ARE RESERVED.

REVISIONS				
ZONE	REV	DESCRIPTION	DATE	APPROVED
A		RELEASED	02-04-04	J.M.

D
C
B
A



OPERATING FREQUENCY BANDS: 1750-1850MHz & 2025-2120MHz User selectable one Band at one time

RF OUTPUT POWER: 100W (+50dBm) Minimum 1dB Comp

DUAL REDUNDANCY: 2ea 100W Amplifiers for each Band with Automatic Antenna/Hot Load Standby switchover when Primary Amplifier Fails

RF INPUT POWER: 0dBm Nominal

RF GAIN: 50dB Minimum

RF ATTENUATION RANGE: 0 to 20dB in 1dB Steps

RF INPUT POWER W/O DAMAGE: +3dBm Maximum

SMALL SIGNAL GAIN FLATNESS: ±1.5dB Maximum into 1.25:1 Load VSWR

INPUT AND OUTPUT IMPEDANCE: 50 Ohm Nominal

INPUT VSWR: 1.25:1 Maximum (Ref 50 Ohm)

OUTPUT VSWR: 1.50:1 Maximum (Ref 50 Ohm)

HARMONIC / SPURIOUS LEVELS: 20dBc Minimum

TEMPERATURE RANGES: Operating -20 to +60°C
Storage -40 to +85°C

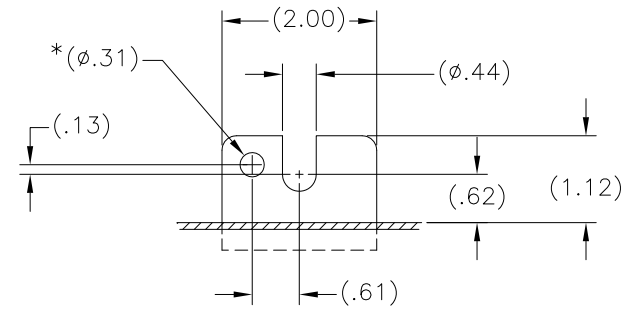
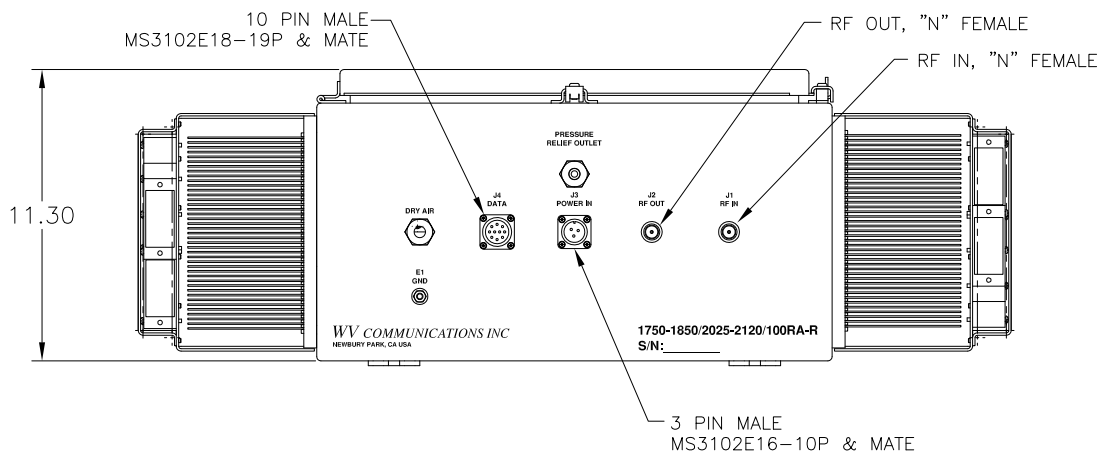
COOLING REQUIRED: Via Built-in Forced Air Cooling

AMPLIFIER PROTECTION: Over Temperature, VSWR, Overdrive

LOCAL CONTROL: Via Internal LCD/Touchscreen Controller

REMOTE CONTROL: Via RS-232 Port

AC INPUT POWER: 115/230VAC 47-63Hz Single Phase Automatically Selectable, 1500VA Maximum



CONN	NOMENCLATURE
J3-A	115/230VAC HOT
J3-B	115/230VAC NEUTRAL
J3-C	SAFETY GROUND

CONN	NOMENCLATURE
J4-A	N/U
J4-B	N/U
J4-C	RS-232 RTN
J4-D	RS-232 (Rx)
J4-E	RS-232 (Tx)
J4-F	RS-232 RTN
J4-G	RTS
J4-H	CTS
J4-J	N/U
J4-K	N/U

SECTION A-A
 (TYP DETAIL OF MOUNTING TAB)
 (*FRONT TABS ONLY)

UNLESS OTHERWISE SPECIFIED: DIMENSIONS ARE IN INCHES. TOLERANCES ARE:		APPROVALS	DATE
FRACTIONS	± 1/64	DRAWN	G. GODDARD
DECIMALS	.XX2, .01	CHECKED	J. MEDINA
ANGLES	±0°30'	MECH ENGR	GG
HOLE	.XX2, .005	ELEC ENGR	JT
	.XXX2, .001	PRODUCTION	AM
MACHINED FINISH:	32 RMS	Q.A.	DB
REMOVE BURRS:	.005 MAX		
MATERIAL			
FINISH			

WV Communications 1176 Tourmaline Dr. Newbury Park, CA

AMPLIFIER DUAL REDUNDANT 100W
 1750-1850/2025-2120 MHz
 P/N 1750-1850/2025-2120/100PA-R

SIZE	CAGE CODE	DWG. NO.	REV
D	1GFQ7	050-50375	A

SCALE NONE SHEET 1 OF 1

900-50132	NASA/TCS
NEXT ASSEMBLY	USED ON
APPLICATION	DO NOT SCALE DRAWING

8 7 6 5 4 3 2 1

D
C
B
A
REV A
DWG NO. 050-50375
REV C, 06/08